

2024 MEMBERSHIP DIRECTORY

INDY
CREW
AWARDS

INDY
CREW 

WWW.INDYCREW.ORG



Beyond

PROUDLY SUPPORTING:

IndyCREW



Supporting our communities has been at the core of who we are and how we approach banking since 1873.

Indianapolis

302 N. Alabama Street | 317-608-2128

888-873-2640

HorizonBank.com



Beyond ordinary banking

COMMERCIAL OFFICE ENVIRONMENTS

HAWORTH

CREATING WORKSPACES WHERE PEOPLE THRIVE



The Hushoffice. A sound choice for new ways of working.

www.coeindy.com | 317.876.9200

MISSION + VISION + GOALS



IndyCREW (Indianapolis Commercial Real Estate Women) was founded 24 years ago as the local chapter of CREW Network. CREW Network has over 14,000 members across 80+ major markets and is the industry's premier business networking organization dedicated to influencing the success of the commercial real estate industry by advancing the achievements of women.

Locally, IndyCREW strives to support the efforts of CREW Network by bringing members together to support each other in achieving greater professional success. We provide opportunities for members to network and do business together. More than 54% of members have received or given a referral within CREW in the last 12 months.

MISSION

To transform the commercial real estate industry by advancing women in the Greater Indianapolis Area.

VISION

IndyCREW will engage quality members who will be change agents committed to transforming the real estate industry into an environment without barriers to entry, which values inclusion and diversity, promotes servant leadership and supports growth and development of people.

VALUES

Leadership

A comprehensive approach to develop and exhibit the best qualities of collaborative leadership.

Excellence

The highest standards and integrity in business.

Influence

The power to be an agent of positive change.

Community

Support, assistance and loyalty to others in a multi-disciplinary organization.

Advancement

Leadership development, education, and opportunities.

Networking

Giving and getting business across the Network.

www.IndyCREW.org

PRESIDENT'S LETTER

Letter from the Chapter President

IndyCREW and I are thrilled to present you with the 14th edition of the IndyCREW Member Directory. Packed with valuable resources, it promises to significantly enhance your CREW Network experience. I encourage each of you to utilize this directory as your primary tool for connecting with fellow members for various business purposes, whether it involves referring clients, seeking services, or networking with other professionals in the commercial real estate industry. Imagine flipping through these pages, putting faces to names, and unleashing the power of your CREW-nections!



Navigating through the directory has been made incredibly easy, whether you're searching alphabetically, by company, or by industry specialty. Additionally, the directory includes a comprehensive list of the exceptional 2024 Board of Directors and Committee Chairs for your reference. I extend my sincere gratitude to Joelle Compton (our Executive Director), Della Dietz and Leslie Steinert (2024 Membership Co-Chairs), Katy Schmidt (2024 Board of Directors Membership Liaison), and the entire Membership Committee for their dedicated efforts in bringing this directory to fruition. Special thanks also go to Caroline Hall and Repro Graphix, Inc. for their generous sponsorship of the printing.

I hope that this directory serves as a valuable tool in fostering new connections, opportunities, and relationships as we collectively work towards advancing women in commercial real estate. Let us make waves, spread love, and create a meaningful impact this year and beyond. Thank you for being an integral part of IndyCREW, and may you enjoy your CREW journey.

With love and high-fives,

Sincerely,

Kristin Hornberger
2024 IndyCREW President

TABLE OF CONTENTS

Mission, Vision, Goals	3
Board Members	5
Committee Chairs	9
Member Directory	20
Specialty Directory	76
Member & Company Listings	98

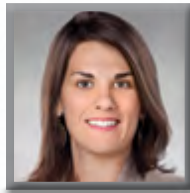
BOARD MEMBERS



CHAPTER PRESIDENT
KRISTIN HORNBERGER
DIRECTOR OF MARKETING
CORNERSTONE COMPANIES, INC.
8902 N. Meridian St., Ste. 205
Indianapolis, IN 46260
(317)754-6244(o) (317)446-8144(m)
khornberger@cornerstonecompaniesinc.com



CHAPTER DELEGATE/PRESIDENT-ELECT
CHELSEA LEITER-THOMPSON
VICE PRESIDENT OF DEVELOPMENT
BROWNING REAL ESTATE PARTNERS
8940 River Crossing Blvd., Ste. 300
Indianapolis, IN 46240
(727)418-5708(o) (727)418-5708(m)
cthompson@browningrep.com



CHAPTER PAST PRESIDENT/TREASURER
SUSAN HARGROVE, VP, SR. COMMERCIAL LENDER
AVP COMMERCIAL LENDER
HORIZON BANK
1216 W. Carmel Dr.
Carmel, IN 46032
(317)219-2339(o) (317)833-9094(m)
shargrove@horizonbank.com



CHAPTER DELEGATE
DANIELLE KAISER, JD
DEPUTY CHIEF UNDERWRITING COUNSEL
DOMA TITLE INSURANCE, INC.
12999 Macalister Trace
Carmel, IN 46033
(317)625-5605(o) (317)625-5605(m)
danielle.kaiser@doma.com



CHAPTER DIRECTOR
NATALIE BEANE, MBA
VP-SENIOR BUSINESS DEVELOPMENT OFFICER-SBA
FIRST CHATHAM BANK
11722 Allisonville Rd., Ste. 103 # 264
Fishers, IN 46038
(317)496-4403(o)
nbeane@cbsba.com

All Board meetings are the second week of the month.

Focused. Innovative. Solutions.

Creatively helping clients solve problems

Real Estate | Litigation | Business

Acquisition ▪ Disposition ▪ Development
Leasing ▪ Finance ▪ Environmental

Plews Shadley Racher & Braun LLP
provides a wide range of real estate,
business, environmental and
litigation services to our emerging
and established clients.

Let our experienced team assist
you with your day-to-day and
complex legal needs.



Plews Shadley
Racher & Braun

Attorneys at Law

Contact: Ali Sylvia

T: 317.637.0700

asylvia@psrb.com

www.psr.com

BOARD MEMBERS



CHAPTER DIRECTOR

JULIA EVINGER

FIRST VICE PRESIDENT INVESTMENTS, DIRECTOR,
NATIONAL OFFICE & INDUSTRIAL PROPERTY GROUP

MARCUS & MILLICHAP

600 E. 96th St., Ste. 500

Indianapolis, IN 46240

(317)218-5366(o)

(317)437-6544(m)

julia.evinger@marcusmillichap.com



CHAPTER DIRECTOR

AUNNA FADNESS, MSES

STRATEGIC ALLIANCE/BUSINESS DEVELOPMENT
MANAGER

ACUITY ENVIRONMENTAL SOLUTIONS

7965 E. 106th St., Ste. 128

Fishers, IN 46038

(574)876-8727(o)

ahuber@acuityes.com



CHAPTER DIRECTOR

BRANDI FLOYD

BUSINESS DEVELOPMENT MANAGER

INTERTEK-PSI

5362 W. 78th St.

Indianapolis, IN 46268

(317)471-7293(o)

(317)471-7293(m)

brandi.floyd@intertek.com



CHAPTER DIRECTOR

KATY SCHMIDT

VICE PRESIDENT OF RESIDENTIAL MANAGEMENT

HENDRICKS COMMERCIAL PROPERTIES

2727 E. 86th St.

Indianapolis, IN 46240-4394

(317)489-6987(o)

(608)931-3389(m)

Katy.Schmidt@hendricksgroup.net



CHAPTER DIRECTOR

VICTORIA SCHUMAN

NATIONAL ACCOUNT MANAGER

CHADWELL SUPPLY

757 Massachusetts Ave., Unit 202

Indianapolis, IN 46204-1682

(260)894-2751(o)

(260)894-2751(m)

victoria.schuman@chadwellsupply.com

BOARD MEMBERS



CHAPTER DIRECTOR
KELLIE SEABROOKS
VICE PRESIDENT OF STRATEGIC INNOVATION & CUSTOMER ENGAGEMENT
RJE BUSINESS INTERIORS
621 E. Ohio St.
Indianapolis, IN 46202
(317)372-7189(o) (317)372-7189(m)
kseabrooks@rje-bi.com



EXECUTIVE DIRECTOR
JOELLE COMPTON
INDYCREW EXECUTIVE DIRECTOR
INDYCREW
PO Box 3461
Carmel, IN 46082
(317)339-3495(m)
indycREW@indycREW.org



AMERICAN
STRUCTUREPOINT
INC.

FULL-SERVICE ARCHITECTURE AND ENGINEERING FIRM

ARCHITECTURE + INTERIORS
CIVIL ENGINEERING
CONSTRUCTION SOLUTIONS
ENVIRONMENTAL SERVICES
INVESTIGATIVE
IT SOLUTIONS

LAND SURVEYING
PLANNING + ECONOMIC
DEVELOPMENT
STRUCTURAL ENGINEERING
TRANSPORTATION
UTILITY INFRASTRUCTURE

www.structurepoint.com



COMMITTEE CHAIRS



CREW NETWORK COMMITTEE CHAIR/CREW CHAMPION

CARRIE SERMERSHEIM, CPSM
PROJECT DEV. | ARCHITECTURE + INTERIORS
AMERICAN STRUCTUREPOINT, INC.

9025 River Rd.
Indianapolis, IN 46240
(317)547-5580(o) (317)416-4731(m)
csermersheim@structurepoint.com



DEI COMMITTEE CO-CHAIR **LINDSAY FERNANDEZ, LEED AP** **PRESIDENT**

CHARLES C. BRANDT CONSTRUCTION CO., WBE
1505 N. Sherman Dr.

Indianapolis, IN 46201-1517
(317)375-1111(o) (317)710-7892(m)
lindsayfernandez@cbrandt.com



EVENTS COMMITTEE CO-CHAIR **PEYTON CARROLL**

DEVELOPMENT ASSOCIATE
THOMPSON THRIFT DEVELOPMENT INC.

111 Monument Cir., Ste. 1500
Indianapolis, IN 46204
(317)496-0036(o) (317)496-0036(m)
pcarroll@thompsonthrift.com



EVENTS COMMITTEE CO-CHAIR **MEGAN MARTIN**

SENIOR ADVISOR
CRESA

3820 Nesbitt Rd.
Indianapolis, IN 46220
(317)454-7171(o) (317)938-3321(m)
mmartin@cresa.com



GOLF COMMITTEE CO-CHAIR **ANN ARMSTRONG**

BUSINESS DEVELOPER
IMEG CORP.

8900 Keystone Crossing, Ste 210
Indianapolis, IN 46240
(317)518-5218(o) (317)518-5218(m)
ann.p.armstrong@imegcorp.com

KNAUSS PROPERTY SERVICES, LLC. EXTERIOR BUILDING MAINTENANCE AND REPAIR

Weatherproofing Buildings Since 1991

Make the **EASY** call!!

For **ALL** your **EXTERIOR BUILDING** waterproofing, maintenance, repair, and rejuvenation!

(Rooftop to below grade)

We're **experts** at identifying and solving all your exterior building maintenance and repair

- Cracked or Worn **Caulking** and **Sealants**
- Window **Sealant** - failures and water intrusion diagnosis
- **EIFS/Stucco** – Sign repairs and Whole Building
- **Masonry** Restoration - in any brick, concrete block, stone etc
- **Emergency Services** – vehicle crashes into building
- Hard to find **Leaks** - Inspection and Repair
- **Budgets** and **Scope** of **WORK**



Speak with **Ralph** about your future fall projects and 2024 budget needs.
Ralph Knauss Cell: 317-590-8750 Email: rknauus@propertyservices.com



COMMITTEE CHAIRS



GOLF COMMITTEE CO-CHAIR

ERIN JONES, CPM
GENERAL MANAGER
ZELLER

201 N. Illinois St., Ste. 325
Indianapolis, IN 46204
(317)813-6103(o) (317)416-8883(m)
ejones@zeller.us



GOLF COMMITTEE CO-CHAIR

JESSICA TAYLOR
REAL ESTATE MANAGER
TONN AND BLANK CONSTRUCTION, LLC

5721 Progress Rd.
Indianapolis, IN 46241-4334
(317)423-1020(128)(o) (463)202-5326(m)
jessica.taylor@tonnandblank.com



MARKETING COMMITTEE CO-CHAIR

ABBI CASSADY
ENGAGEMENT COORDINATOR
INDIANA MEMBERS CREDIT UNION

12725 Old Meridian St.
Carmel, IN 46032-8704
(317)554-2981(o) (812)550-8911(m)
acassady@imcu.com



MARKETING COMMITTEE CO-CHAIR

ANDREA CASTANEDA
DIRECTOR OF MARKETING
THOMPSON THRIFT DEVELOPMENT INC.

111 Monument Cir., Ste. 1500
Indianapolis, IN 46204
(626)496-8740(o) (626)496-8740(m)
acastaneda@thompsonthrift.com



MEMBERSHIP COMMITTEE CO-CHAIR

DELLAMARIE DIETZ
VP & CREDIT MANAGER
THE NATIONAL OF INDIANAPOLIS

107 N. Pennsylvania St., Ste. 300
Indianapolis, IN 46204-2419
(317)459-0319(o) (317)459-0319(m)
delladietz@nbofi.com

COMMITTEE CHAIRS



MEMBERSHIP COMMITTEE CO-CHAIR

LESLIE STEINERT, MBA

VICE PRESIDENT

LANDWORX ENGINEERING, LLC

958 E. Washington St., Ste. 100

Indianapolis, IN 46202-3987

(317)616-0177(o)

(317)488-7104(m)

leslie.steinert@landworxeng.com



MENTOR COMMITTEE CO-CHAIR

MARY SLADE

LEGAL COUNSEL

METROPOLITAN TITLE COMPANY

8420 N. Park Ave.

Indianapolis, IN 46240-2242

(317)869-2436(o)

(317)869-2436(m)

mslade@metrotci.com



MENTOR COMMITTEE CO-CHAIR

JULIE WEISENBACH

VP, TALENT & CULTURE

AMBROSE PROPERTY GROUP, MBE

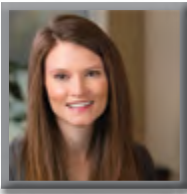
8888 Keystone Xing., Ste. 1150

Indianapolis, IN 46240-4621

(317)6405104(o)

(317)640-5104(m)

jweisenbach@ambrosepg.com



SPONSORSHIP COMMITTEE CO-CHAIR

ASHLEY CHRISTIE, CPA

PARTNER

KATZ SAPPER & MILLER

800 E. 96th St., Ste. 500

Indianapolis, IN 46240-4570

(317)428-1188(o)

(317)432-5023(m)

achristie@ksmcpa.com



SPONSORSHIP COMMITTEE CO-CHAIR

WHITNEY TURSO

ACCOUNT EXECUTIVE

AMERICAN SOUND - INDY

6500 Technology Center Dr., Ste. 300

Indianapolis, IN 46278

(859)802-1159(o)

(317)250-9714(m)

whitneyturso@asei.cc

COMMITTEE CHAIRS



UCREW COMMITTEE CO-CHAIR
KARMEN DEATON, PE
CIVIL ENGINEER
KIMLEY-HORN AND ASSOCIATES, INC.
500 E. 96th St., Ste. 300
Indianapolis, IN 46240-3781
(317)296-7096(o) (812)241-1530(m)
karmen.deaton@kimley-horn.com



UCREW COMMITTEE CO-CHAIR
NAOMI FOSTER
CIVIL ENGINEER/AVIATION
JQOL
8440 Allison Pointe Blvd., Ste. 425
Indianapolis, IN 46250
(918)408-7618(m)
nfoster@jqolusa.com



WOMEN IN LEADERSHIP COMMITTEE CO-CHAIR
LEAH FANTIN, CPM
SENIOR REAL ESTATE MANAGER
CBRE, INC.
8888 Keystone Crossing
Indianapolis, IN 46240
(317)269-1080(o) (812)375-4439(m)
Leah.Fantin@cbre.com



WOMEN IN LEADERSHIP COMMITTEE CO-CHAIR
BONNIE RILEY
ASSISTANT VP, EXECUTIVE BANKER | BUSINESS DEVELOPMENT OFFICER
COMMUNITY FIRST BANK OF INDIANA
9333 N. Meridian St., Ste. 125
Indianapolis, IN 46260
(317)763-5232(o) (219)869-0161(m)
briley@cfbindiana.com

**KSM is honored
to support
IndyCREW.**

ksm

CPAs &
Advisors

ksmcpa.com



SCANNELL
PROPERTIES

BUILDING SOLUTIONS THAT MATTER

Scannell Properties is a privately held real estate development and investment company specializing in build-to-suit and speculative development of industrial, office, and multifamily facilities throughout the U.S., Canada, and Europe.



[scannellproperties.com](https://www.scannellproperties.com)

2024 EVENTS



APRIL 16, 2024

Luncheon

MAY 14, 2024

IndyCREW Day at the Track

JUNE 5, 2024

Golf & Cocktails Clinic

JUNE 27, 2024

Golf Outing

JUNE 20, 2024

CREW Network
Leadership Summit
Charlotte, NC

AUGUST 20, 2024

Luncheon

SEPTEMBER 17, 2024

Luncheon

SEPTEMBER 20, 2024

CREW Network Convention
Atlanta

OCTOBER 24, 2024

Joint Industry Luncheon

NOVEMBER 21, 2024

Luncheon

DECEMBER 6, 2024

Holiday Party

VISIT OUR WEBSITE FOR MORE DATES AND DETAILS



2024 CREW Network Convention & Marketplace



SEPTEMBER 25, 2024 • VANCOUVER, BRITISH COLUMBIA, CANADA



FISHERS DISTRICT

Your one-stop shop for full-service consulting.

PRIVATE DEVELOPMENT:

Mixed-Use, Industrial, Commercial, Multi-Family, Single-Family, Healthcare, Education

PUBLIC DEVELOPMENT:

Municipal, Structural, Aviation, Environmental, Landscape Architecture, MEP, Asset Management, Surface Water, Utilities, Solar

110+
Offices
nationwide

7,400+ Staff

2 LOCAL INDIANA OFFICES

90+ INDIANA-BASED EMPLOYEES

FORTUNE'S TOP 100

PLACES FOR WOMEN TO WORK

Kimley»Horn
Expect More. Experience Better.

PAST PRESIDENTS



2023
SUSAN HARGROVE



2022
LAURA HAYNES



2021
DENISE M. KOURIL



2020
CINDY REESE



2019
JILL ROSE



2018
BRANDI FLOYD



2017
LAUREN KRINER



2016
LESLIE TESKEY



2015
ALI SYLVIA



2014
DENISE PRAUL



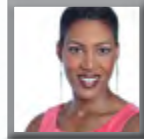
2013
LESLIE WAGNER



2012
BROOKE SIPE



2011
DEE HEADLEY



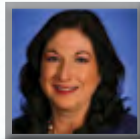
2010
ESTHER CARTER-DAY



2009
MARSHA GRAY



2008
ANN GARNER



2007
SHOKRINA
RADPOUR-BEERING



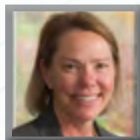
2006
LISA INGRAM



2005
MARY BETH KOHART



2004
JANICE PAINE



2003
BETH YOUNG



2001-2002
DONNA HOVEY



PROTECT. PREVENT. PRESERVE.

Systems



FIRE SPRINKLERS



FIRE ALARM & DETECTION



FIRE EXTINGUISHERS



SPECIAL HAZARDS

Services

FABRICATION INSTALLATION
DESIGN PROJECT
ENGINEERING MANAGEMENT
ESTIMATING

About Us:

Our mission is to develop world class talent to create and maintain fire protection solutions with an unparalleled customer experience. Our knowledgeable and highly responsive team brings passion to every challenge.



RYAN FIREPROTECTION, INC

NOBLESVILLE | VALPARAISO | LOUISVILLE |
SOUTH BEND | INDIANAPOLIS | FT WAYNE |
BLOOMINGTON | MILWAUKEE | CINCINNATI

RYANFP.COM

800-409-7606

24/7 EMERGENCY SERVICE

317.637.3377

graphics@reprographix.com



WINDOW GRAPHICS



PRIVACY FILM



ADA SIGNAGE



WAYFINDING SIGNAGE



EVENT GRAPHICS



WALLCOVERINGS

PLANS + SPECS

- DRAWINGS
- ePLANROOM
- SCANNING
- SITE SIGNAGE
- MANUALS

COLLATERAL

- BROCHURES
- POSTERS
- BANNERS
- BUSINESS CARDS
- STATIONERY

GRAPHICS

- WALL
- WINDOW
- FLOOR
- TRADESHOW
- BACKLITS

PRINT + ROUTE

- PLASTICS
- METALS
- WOODS
- MAGNETS
- LASER CUTTING

FINE ART

- DIGITIZATION
- REPRODUCTION
- TOUCH-UP
- DISPLAYS
- UPSCALING



BRAILLE



MAGNET



STAND-OFF



FINE-ART



BANNER



WAYFINDING



METAL

— 2024 —

Member Directory

MEMBERS



JENNIFER ALLINSON

PROJECT COORDINATOR

AVENUE CONSTRUCTION

8435 Keystone Crossing Blvd, Ste 140

Indianapolis, IN 46240

(317)703-0902(o)

MEMBER SINCE 2023

jallinson@avenuedevelopment.com

CONSTRUCTION MANAGEMENT/GENERAL CONTRACTING



ANN ARMSTRONG

BUSINESS DEVELOPER

IMEG CORP.

8900 Keystone Crossing, Ste 210

Indianapolis, IN 46240

(317)518-5218(o)

(317)518-5218(m)

MEMBER SINCE 2014

ann.p.armstrong@imegcorp.com

INTERIOR DESIGN/SPACE PLANNING



JULIE ASHMORE, JD

PRESIDENT & CEO

ASHMORE CONSULTING LLC, WBE

PO Box 98

Trafalgar, IN 46181-0098

(317)727-4243(o)

(317)727-4243(m)

MEMBER SINCE 2017

jashmore@ashmoreconsult.com

ECONOMIC DEVELOPMENT



LAUREN BAKER

DESIGN DEVELOPMENT MANAGER

MILHAUS

550 E. Washington St.

Indianapolis, IN 46204

(317)679-8449(o)

MEMBER SINCE 2023

lbaker180@gmail.com

INTERIOR DESIGN/SPACE PLANNING



KATHLEEN BARBAGLIA

VICE PRESIDENT & OFFICE ADMINISTRATOR

PEDCOR INVESTMENTS

770 3rd Ave. SW, One Pedcor Square

Carmel, IN 46032-7613

(317)587-0359(o)

(317)696-1995(m)

MEMBER SINCE 2005

kittyb@pedcor.net

DEVELOPMENT, REAL ESTATE

MEMBERS



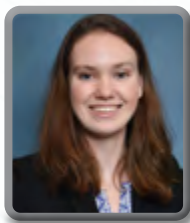
ALICIA BAYS
ACCOUNT MANAGER
RYAN FIRE PROTECTION, INC.
9740 E. 148th St.
Noblesville, IN 46060-4252
(317)645-5751(o)
MEMBER SINCE 2023
abays@ryanfp.com
FIRE PROTECTION



NATALIE BEANE, MBA
VP—SR. BUSINESS DEVELOPMENT OFFICER—SBA
FIRST CHATHAM BANK
11722 Allisonville Rd., Ste. 103 # 264
Fishers, IN 46038-2327
(317)496-4403(o)
MEMBER SINCE 2017
nbeane@firstchatham.com
LENDING/FINANCE



MARLA BEARD
MARKETING MANAGER
DENISON PARKING, INC.
320 N. Meridian St., Ste. 700
Indianapolis, IN 46204
(463)242-1324(o) (317)779-5751(m)
MEMBER SINCE 2022
mbeard@denisonparking.com
PARKING



CASEY BECKER
CIVIL ENGINEERING ANALYST
KIMLEY-HORN AND ASSOCIATES, INC.
250 E. 96th St., Ste. 580
Indianapolis, IN 46240
(317)683-9873(o)
MEMBER SINCE 2022
casey.becker@kimley-horn.com
ENGINEERING



VALERIE BECKER
SENIOR DIRECTOR, CAPITAL
SCANNELL PROPERTIES
8801 River Crossing Blvd., Ste. 300
Indianapolis, IN 46240-2394
(317)218-1688(o) (704)724-7370(m)
MEMBER SINCE 2017
valerieb@scannellproperties.com
LENDING/FINANCE

MEMBERS



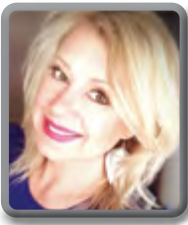
SHONA BEDWELL
SENIOR VP - MARKETING & HUMAN RESOURCES
BECKNELL INDUSTRIAL
2750 E. 146th St., Ste. 200
Carmel, IN 46033-7236
(317)669-6005(o) (317)418-3912(m)
MEMBER SINCE 2016
shedwell@becknellindustrial.com
DEVELOPMENT, REAL ESTATE



JULIE BERRY, NCIDQ, LEED-AP, RID
PRESIDENT, INDIANA
CARSON DESIGN ASSOCIATES, DBE, WBE, WOSB
9415 Delegates Row
Indianapolis, IN 46240-3805
(317)843-3760(o) (317)372-3346(m)
MEMBER SINCE 2012
jberry@carsondesign.com
INTERIOR DESIGN/SPACE PLANNING



ALISON BIRGE
EXECUTIVE VP DEVELOPMENT & FINANCE
VILLAGE CAPITAL CORPORATION
770 3rd Ave. SW
Carmel, IN 46032
(317)414-7982(o)
MEMBER SINCE 2022
abirge@pedcor.net
DEVELOPMENT, REAL ESTATE

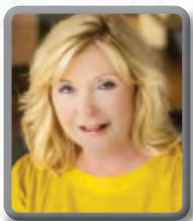


SKY BLOCK
BUSINESS DEVELOPMENT REPRESENTATIVE
BAUMGARTNER COMPANY
12461 Reynolds Dr.
Fishers, IN 46038-9265
(317)987-6606(o) (317)987-6606(m)
MEMBER SINCE 2020
Sblock@baumgartnerasphalt.com
ASPHALT SERVICES



BRAD BOJRAB, AET
VICE PRESIDENT OF BUSINESS DEVELOPMENT
RYAN FIRE PROTECTION, INC.
9740 E. 148th St.
Noblesville, IN 46060-4252
(317)750-5872(o) (317)750-5872(m)
MEMBER SINCE 2021
bbojrab@ryanfp.com
FIRE PROTECTION

MEMBERS



KELLIE BOSTON
SALES MANAGER
METROPOLITAN TITLE OF CENTRAL INDIANA
900 E. 96th St., Ste. 105
Indianapolis, IN 46240
(317)570-2600(o) (317)719-7937(m)
MEMBER SINCE 2023
kstanleyboston@metrotci.com
TITLE/ESCROW



LINDSEY BRIDGEWATER
ASSOCIATE
CBRE, INC.
8888 Keystone Crossing, Ste. 1000
Indianapolis, IN 46240
(317)269-1131(o) (765)721-4130(m)
MEMBER SINCE 2022
lindsey.bridgewater@cbre.com
BROKERAGE



KYLIE BRIGHT-SCHULER, EI
SENIOR STAFF ENGINEER
AMERICAN STRUCTUREPOINT, INC.
9025 River Rd., Ste. 200
Indianapolis, IN 46240
(317)547-5580(o) (317)294-5695(m)
MEMBER SINCE 2023
kbright@structurepoint.com
ENGINEERING



LORI BRINES
COMMERCIAL/INVESTOR MANAGER
SECURITY TITLE SERVICES
9225 Priority Way West Dr., Ste. 110
Indianapolis, IN 46240-1572
(317)208-5550(o) (317)441-6790(m)
MEMBER SINCE 2018
lbrines@stindy.com
TITLE/ESCROW



ERIN BROWN
DIRECTOR OF MARKETING STRATEGY
MATCHBOOK, WBE
1317 N. Pennsylvania St.
Indianapolis, IN 46202
(317)525-9859(o)
MEMBER SINCE 2024
ebrown@mtchbk.com
MARKETING/ADVERTISING

MEMBERS



SAMANTHA BUCK

**DIR. OF OPERATIONS—PROPERTY MANAGEMENT
COMMONWEALTH COMMERCIAL PARTNERS**

14223 Avian Way, Ste. 20

Carmel, IN 46033

(615)600-9004(o)

MEMBER SINCE 2024

sbuck@commonwealthcommercial.com

PROPERTY MANAGEMENT



KARLA BURCK

**EXECUTIVE VICE PRESIDENT—DEVELOPMENT
KCG DEVELOPMENT, LLC**

9311 N. Meridian St., Ste. 100

Indianapolis, IN 46260-1865

(317)452-3729(o) (317)452-3729(m)

MEMBER SINCE 2013

karla.burck@kcgcompanies.com

ACQUISITIONS/DISPOSITIONS



MOLLY BURNS

**VICE PRESIDENT CORPORATE MARKETING
FA WILHELM**

3914 Prospect St.

Indianapolis, IN 46203-2300

(317)440-6071(o) (317)440-6071(m)

MEMBER SINCE 2017

mollyburns@fawilhelm.com

CONSTRUCTION MGMNT/GENERAL CONTRACTING



ANDREW BURROUGHS

**SENIOR VICE PRESIDENT
PEDCOR INVESTMENTS LLC**

770 3rd Ave. SW

Carmel, IN 46032-7613

(317)587-0348(o) (317)313-3691(m)

MEMBER SINCE 2011

andy@pedcor.net

DEVELOPMENT, REAL ESTATE



HEATHER BUSH, NCIDQ

**PROJECT MANAGER & DESIGNER
CARSON DESIGN ASSOCIATES, DBE, WBE, WOSB**

9415 Delegates Row

Indianapolis, IN 46240

(317)843-5979(o) (317)443-8028(m)

MEMBER SINCE 2023

hbush@carsondesign.com

INTERIOR DESIGN/SPACE PLANNING



**Smart decisions
today.**

**Lasting value
tomorrow.TM**

At Crowe, we help our clients embrace volatility in today's business environment. We work with them to make smart decisions amid complexity, which drives lasting value – sometimes in unexpected ways.

With more than 75 years of real estate industry experience, Crowe is a recognized leader for audit, tax, advisory, and consulting services.

To learn more, visit **[crowe.com](https://www.crowe.com)**.

Contact:

Jennifer McNett
+1 317 208 2510
jennifer.mcnett@crowe.com

AUDIT | TAX | ADVISORY | CONSULTING

Visit www.crowe.com/disclosure for more information about Crowe LLP, its subsidiaries, and Crowe Global. © 2023 Crowe LLP.

Tax2399-002G

MEMBERS



MICHAEL BYRON
VICE PRESIDENT—DEVELOPMENT
PEDCOR INVESTMENTS LLC
770 3rd Ave. SW
Carmel, IN 46032-7613
(317)218-2702(o) (317)430-7916(m)
MEMBER SINCE 2022
mbyron@pedcor.net
DEVELOPMENT, REAL ESTATE



RACHELE CAGLE
CERTIFIED GENERAL APPRAISER
RALLY APPRAISAL LLC
333 E. Minnesota St.
Indianapolis, IN 46225
(563)449-6345(o)
MEMBER SINCE 2023
rcagle@rallyappraisal.com
APPRAISAL



CHRISTA CALDERONE, SLD
SR. MGR. OFFICE AGENCY SERVICES | INDIANAPOLIS
COLLIERS
241 N. Pennsylvania St., Ste. 300
Indianapolis, IN 46204-2408
(317)713-2151(o) (317)490-1100(m)
MEMBER SINCE 2014
christa.calderone@colliers.com
BROKERAGE, SLD



HEATHER CALVIN
SR. BUSINESS RELATIONSHIP MANAGER VP
JP MORGAN CHASE
1 E. Ohio St.
Indianapolis, IN 46277
(317)684-1556(o) (317)661-1260(m)
MEMBER SINCE 2022
heather.n.calvin@chase.com
LENDING/FINANCE



STEPHANIE CARLSON
OWNER
NATURSPIRE, WBE
200 S. Rangeline Rd., Ste. 120B
Carmel, IN 46032
(317)414-5607(o)
MEMBER SINCE 2024
steph@naturspire.com
LANDSCAPING

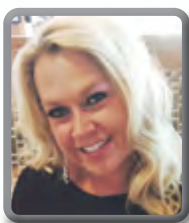
MEMBERS



PEYTON CARROLL
DEVELOPMENT ASSOCIATE
THOMPSON THRIFT DEVELOPMENT INC.
111 Monument Cir., Ste. 1500
Indianapolis, IN 46204
(317)496-0036(o) (317)496-0036(m)
MEMBER SINCE 2022
pcarroll@thompsonthrift.com
DEVELOPMENT, REAL ESTATE



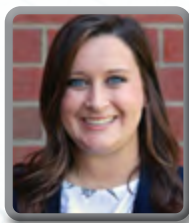
KRISTY CARTER
EXECUTIVE VP OF ASSET MANAGEMENT
KENNMAR
3500 Depauw Blvd., Ste. 2060
Indianapolis, IN 46268
(317)797-7629(o) (317)797-7629(m)
MEMBER SINCE 2014
kristyncarter@comcast.net
ASSET MANAGEMENT



MARY CARTER
MAJOR ACCOUNTS EXECUTIVE
HAYS & SONS COMPLETE RESTORATION, VO
757 E. Murry St.
Indianapolis, IN 46227-1139
(317)504-1109(o) (317)504-1109(m)
MEMBER SINCE 2014
Mcarter@haysandsons.com
RESTORATION



JOSH CARUANA
FIRST VICE PRESIDENT, DISTRICT MANAGER
MARCUS & MILLICHAP
600 E. 96th St., Ste. 500
Indianapolis, IN 46420
(317)218-5350(o)
MEMBER SINCE 2023
jcaruana@marcusmillichap.com
BROKERAGE



ABBI CASSADY
ENGAGEMENT COORDINATOR
INDIANA MEMBERS CREDIT UNION
12725 Old Meridian St.
Carmel, IN 46032-8704
(317)554-2981(o) (812)550-8911(m)
MEMBER SINCE 2021
acassady@imcu.com
LENDING/FINANCE

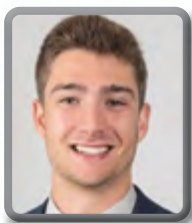
MEMBERS



ANDREA CASTANEDA
DIRECTOR OF MARKETING
THOMPSON THRIFT DEVELOPMENT INC.
111 Monument Cir., Ste. 1500
Indianapolis, IN 46204
(626)496-8740(o) (626)496-8740(m)
MEMBER SINCE 2022
acastaneda@thompsonthrift.com
DEVELOPMENT, REAL ESTATE



ANGELA CECIL
VP, COMMERCIAL COMMERCIAL BANKING
BMO HARRIS BANK, N.A.
135 N. Pennsylvania St., Fl 10
Indianapolis, IN 46204-2435
(317)269-1321(o) (317)727-3399(m)
MEMBER SINCE 2015
angela.cecil@bmo.com
LENDING/FINANCE



RUSSELL CHAIN
ASSISTANT PROPERTY MANAGER
ZELLER
201 N. Illinois St.
Indianapolis, IN 46204
(317)813-6106(o)
MEMBER SINCE 2023
rchain@zeller.us
PROPERTY MANAGEMENT



ASHLEY CHRISTIE, CPA
PARTNER
KATZ SAPPER & MILLER
800 E. 96th St., Ste. 500
Indianapolis, IN 46240-4570
(317)428-1188(o) (317)432-5023(m)
MEMBER SINCE 2019
achristie@ksmcpa.com
ACCOUNTING



AARON CLOPTON
ASSOCIATE
MARCUS & MILLICHAP
600 E. 96th St., Ste. 500
Indianapolis, IN 46420
(317)218-5382(o) (225)329-6249(m)
MEMBER SINCE 2023
Aaron.Clopton@marcusmillichap.com
BROKERAGE



RJE

Spaces that inspire.
People who delight.



Experts in workplace consulting, prefab interior construction, and furniture.

Create your inspiring space with us.

RJEBusinessInteriors.com

Kellie Seabrooks: kseabrooks@rie-bi.com



RJEBusinessInteriors

MEMBERS



KARA COCHRANE

**BUSINESS DEVELOPMENT LEAD
SELECT COMMERCIAL SERVICES**

8770 Guion Rd., Ste. N
Indianapolis, IN 46268-3017
(317)727-1709(o) (317)727-1709(m)

MEMBER SINCE 2013
kcochrane@selectservice.us
PROPERTY MAINTENANCE



LORI COE

**CAREER CONSULTANT
BUTLER UNIVERSITY**

4600 Sunset Ave.
Indianapolis, IN 46208-3487
(317)940-6854(o)

MEMBER SINCE 2021
lcoe@butler.edu
EDUCATION



CLAIRE COLLETT

**ENTREPRENEURSHIP & INNOVATION MANAGER
BOONE COUNTY ECONOMIC DEVELOPMENT
CORPORATION**

2030 Indianapolis Ave.
Lebanon, IN 46052
(317)719-1990(o)

MEMBER SINCE 2023
claire@betterinboone.org
ECONOMIC DEVELOPMENT



KIAMESHA-SYLVIA COLOM

**PARTNER
TAFT STETTINIUS & HOLLISTER LLP**

1 Indiana Sq., Ste. 3500
Indianapolis, IN 46204-2023
(317)713-3340(o) (317)727-3829(m)

MEMBER SINCE 2012
KCOLOM@TAFTLAW.COM
LAW

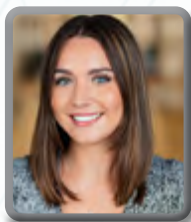


JOELLE COMPTON

**EXECUTIVE DIRECTOR
INDYCREW**

PO Box 3461
Carmel, IN 46082
(317)339-3495(o)
MEMBER SINCE 2001
indycrew@indycrew.org
INDYCREW

MEMBERS



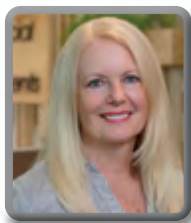
EMMA CONEY
PROJECT COORDINATOR
MCGUIRE SPONSEL
201 N. Illinois St., Ste. 1000
Indianapolis, IN 46204
(317)207-9283(o) (317)735-5451(m)
MEMBER SINCE 2022
econey@mcguiresponsel.com
CONSULTING



KAYLEE CONLEY
ASSOCIATE
STOLL KEENON OGDEN
334 N. Senate Ave.
Indianapolis, IN 46204
(317)396-2586(o) (765)228-4489(m)
MEMBER SINCE 2023
kaylee.conley@skofirm.com
LAW



JANMARIE CONNOR
PRESIDENT/CEO
CONNOR FINE PAINTING, INC., MBE, WBE, WOSB
6925 Hawthorn Park Dr.
Indianapolis, IN 46220-3910
(317)423-0000(o) (317)753-6880(m)
MEMBER SINCE 2018
jconnor@connorpainting.com
PAINTING CONTRACTOR



SARA COOK
PRESIDENT
COMMERCIAL OFFICE ENVIRONMENTS, WBE
7301 Zionsville Rd.
Indianapolis, IN 46268-2168
(317)876-9200(o) (317)538-9624(m)
MEMBER SINCE 2016
scook@coeindy.com
INTERIOR DESIGN/SPACE PLANNING



ALTHEA COOPER
COMMERCIAL RELATIONSHIP MANAGER
OLD NATIONAL BANK
15941 Cumberland Rd.
Noblesville, IN 46037
(317)250-3936(o) (317)250-3936(m)
MEMBER SINCE 2023
althea.cooper@oldnational.com
LENDING/FINANCE

MEMBERS



AMBER CORYELL
BUSINESS DEVELOPMENT OFFICER
INDIANA MEMBERS CREDIT UNION

5105 Madison Ave.
Indianapolis, IN 46227-4239
(317)554-8101(o)

MEMBER SINCE 2021

acoryell@imcu.com

LENDING/FINANCE



DANIELLE COSGROVE
SALES REPRESENTATIVE
PLANES COMPANIES

2635 Planes Dr.
Indianapolis, IN 46219
(317)565-3459(o)

MEMBER SINCE 2023

dcosgrove@planescompanies.com

RELOCATION SERVICES



JULIE CREWE-SCHILLING, LPG
ENVIRONMENTAL SERVICES GROUP LEADER
V3 COMPANIES

619 North Pennsylvania St.
Indianapolis, IN 46204

(317)748-6838(o) (317)748-6838(m)

MEMBER SINCE 2018

jcrewe@v3co.com

ENVIRONMENTAL



CASEY CUPP
FOUNDER, MARKETING CONSULTANT
CCUPP MARKETING CONSULTANTS

5665 Kenyon Trl.
Noblesville, IN 46062-6993
(317)727-9014(o) (317)727-9014(m)

MEMBER SINCE 2016

ccupp@ccuppmarketing.com

MARKETING/ADVERTISING



REBECCA DEAN
VICE PRESIDENT
BUSINESS FURNITURE, LLC, WBE

8421 Bearing Dr.
Indianapolis, IN 46268-1686
(317)371-7503(o) (317)371-7503(m)

MEMBER SINCE 2001

deanr@businessfurniture.net

INTERIOR DESIGN/SPACE PLANNING



MERIDIAN TITLE
YOUR PEACE OF MIND



meridiantitle.com



Meridian Title is a proud sponsor of
IndyCREW and your trusted partner for
Commercial Real Estate transactions.

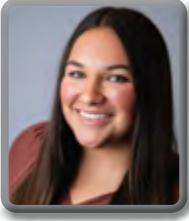
Denise Kouril

Commercial Account Manager
317.750.4545
dkouril@meridiantitle.com

MEMBERS



KARMEN DEATON, PE
CIVIL ENGINEER
KIMLEY-HORN AND ASSOCIATES, INC.
500 E. 96th St., Ste. 300
Indianapolis, IN 46240-3781
(317)296-7096(o) (812)241-1530(m)
MEMBER SINCE 2022
karmen.deaton@kimley-horn.com
ENGINEERING



ALONDRA DELAO
COMMUNITY ENGAGEMENT MANAGER
ZELLER
201 N. Illinois St.
Indianapolis, IN 46204
(317)599-7578(o)
MEMBER SINCE 2024
capcenteramenities@zeller.us
PROPERTY MANAGEMENT



ERIN DETTWILER
FIRST VP, MGR, INVESTMENT REAL ESTATE
FIRST MERCHANTS BANK
221 Red Oak Ln.
Carmel, IN 46033-1969
(317)566-6126(o) (317)690-3967(m)
MEMBER SINCE 2013
edettwiler@firstmerchants.com
LENDING/FINANCE



DEMETRA DEYAMPERT, MBA
CONSTRUCTION DRAW COORDINATOR
BECKNELL INDUSTRIAL
1497 Starcross Ln., #120
Carmel, IN 46280
(260)580-4075(o) (260)580-4075(m)
MEMBER SINCE 2023
ddeyampert@becknellindustrial.com
DEVELOPMENT, REAL ESTATE



DELLAMARIE DIETZ
VP & CREDIT MANAGER
THE NATIONAL OF INDIANAPOLIS
107 N. Pennsylvania St., Ste. 300
Indianapolis, IN 46204-2419
(317)459-0319(o) (317)459-0319(m)
MEMBER SINCE 2018
delladietz@nbofi.com
LENDING/FINANCE

MEMBERS



JACKIE DODD, JD

ATTORNEY

JACKIE S. DODD, ATTORNEY AT LAW

8935 N. Meridian St., Ste. 115

Indianapolis, IN 46260-5348

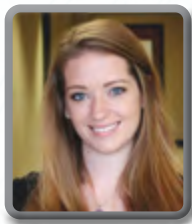
(317)580-9301(o)

(317)442-4965(m)

MEMBER SINCE 2015

jackie@jstdlaw.com

LAW



PATRICIA DONOVAN

BUSINESS DEVELOPMENT MANAGER

ERMCO

95 Commerce Pkwy. West Dr.

Greenwood, IN 46143

(317)396-4980(o)

(317)538-5511(m)

MEMBER SINCE 2022

pdonovan@ermco.com

ELECTRICAL CONTRACTOR



BRITTANY DOWELL

DIRECTOR OF HUMAN RESOURCES

THE PETERSON COMPANIES

7132 Zionsville Rd.

Indianapolis, IN 46268

(317)910-8445(o)

MEMBER SINCE 2024

bsiegler@thepetersonco.com

CRE HUMAN RESOURCES



GILLIAN DOWNHAM

VICE PRESIDENT

BECOVIC MANAGEMENT GROUP

8100 E. 106th St., Ste. 200

Fishers, IN 46038

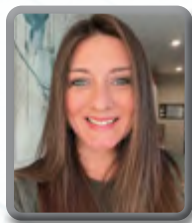
(317)570-0400(o)

(317)281-7236(m)

MEMBER SINCE 2023

gdownham@becovicmgmt.com

PROPERTY MANAGEMENT



MEGAN DRUMMOND, CPM

SENIOR PROPERTY MANAGER

CORNERSTONE COMPANIES, INC.

8902 N. Meridian St., Ste. 205

Indianapolis, IN 46260-5369

(317)288-9005(o)

(317)748-4504(m)

MEMBER SINCE 2009

mdrummond@cornerstonecompaniesinc.com

PROPERTY MANAGEMENT

MEMBERS



ALETHA DUNSTON, AICP

DIRECTOR

INDIANAPOLIS ECONOMIC DEVELOPMENT

6431 Evanston Ave.

Indianapolis, IN 46220

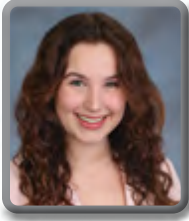
(765)661-4724(o)

(765)661-4724(m)

MEMBER SINCE 2020

alethadunston@gmail.com

ECONOMIC DEVELOPMENT



MADLINE ELSON

STUDENT

INDIANA UNIVERSITY

107 S. Indiana Ave.

Bloomington, IN 47405

(317)402-3767(o)

MEMBER SINCE 2023

mcelson@iu.edu

UNDERGRADUATE STUDENT MEMBER



JULIA EVINGER

**FIRST VICE PRESIDENT INVESTMENTS, DIRECTOR,
NATIONAL OFFICE & INDUSTRIAL PROPERTY GROUP**

MARCUS & MILLICHAP

600 E. 96th St., Ste. 500

Indianapolis, IN 46240

(317)218-5366(o)

(317)437-6544(m)

MEMBER SINCE 2017

julia.evinger@marcusmillichap.com

ACQUISITIONS/DISPOSITIONS



AUNNA FADNESS, MSES

STRATEGIC ALLIANCE/BUSINESS DEV. MANAGER

ACUITY ENVIRONMENTAL SOLUTIONS

7965 E. 106th St., Ste. 128

Fishers, IN 46038-2505

(574)876-8727(o)

MEMBER SINCE 2017

ahuber@acuityes.com

ENVIRONMENTAL



JENELL FAIRMAN, PE, LEED, AP

DIRECTOR OF ECONOMIC DEVELOPMENT

CITY OF WESTFIELD

2728 E. 171st St.

Westfield, IN 46074

(317)663-9530(o)

(317)663-9530(m)

MEMBER SINCE 2013

jfairman@westfield.in.gov

ECONOMIC DEVELOPMENT



CBRE

The more perspectives we have, the more dimensions we see.

We work in every dimension of commercial real estate. Our mission is to realize the potential in all the businesses and people we work with, so that together we can create the real estate solutions of the future.

We are driven by the entrepreneurial spirit of our people and the diverse needs of our clients. From instilling confidence in investors today, to re-imagining space requirements for tomorrow, we thrive in complex and ever-changing environments.

Learn more at cbre.com/Indianapolis

MEMBERS



LEAH FANTIN, CPM
SENIOR REAL ESTATE MANAGER
CBRE, INC.
8888 Keystone Crossing
Indianapolis, IN 46240
(317)269-1080(o) (812)375-4439(m)
MEMBER SINCE 2016
Leah.Fantin@cbre.com
PROPERTY MANAGEMENT



MARISSA FARMER
LEASING MANAGER
KEYSTONE CORPORATION
47 S. Pennsylvania St., 10th Floor
Indianapolis, IN 46204
(317)397-1881(o)
MEMBER SINCE 2023
mfarmer@keystone-corp.com
BROKERAGE



LINDSAY FERNANDEZ, LEED AP
PRESIDENT
CHARLES C. BRANDT CONSTRUCTION CO., WBE
1505 N. Sherman Dr.
Indianapolis, IN 46201-1517
(317)375-1111(o) (317)710-7892(m)
MEMBER SINCE 2018
lindsayfernandez@cbrandt.com
CONSTRUCTION MANAGEMENT/GENERAL CONTRACTING

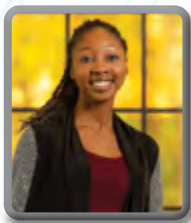


JENNIFER FITZWATER, JD
VICE PRESIDENT, COMMERCIAL TITLE
VYLLA TITLE, LLC
15982 Oakhurst Ln.
Fishers, IN 46040
(317)922-3445(o) (317)332-1337(m)
MEMBER SINCE 2022
jennifer.fitzwater@vylla.com
TITLE/ESCROW



BRANDI FLOYD
BUSINESS DEVELOPMENT MANAGER
INTERTEK-PSI
5362 W. 78th St.
Indianapolis, IN 46268
(317)471-7293(o) (317)471-7293(m)
MEMBER SINCE 2012
brandi.floyd@intertek.com
ENVIRONMENTAL

MEMBERS



NAOMI FOSTER
CIVIL ENGINEER/AVIATION
JQOL
8440 Allison Pointe Blvd., Ste. 425
Indianapolis, IN 46250
(918)408-7618(o)
MEMBER SINCE 2021
nfoster@jqolusa.com
ENGINEERING



CHRISTINA FUGATE
ATTORNEY
ICE MILLER LLP
1 American Sq., Ste. 2900
Indianapolis, IN 46282-0015
(317)236-2374(o) (317)506-3940(m)
MEMBER SINCE 2011
christina.fugate@icemiller.com
LAW



MELISSA GARRISON, RA, RID
LICENSED ARCHITECT
CURRAN ARCHITECTURE
5719 Lawton Loop East Dr., Ste. 212
Indianapolis, IN 46216
(317)288-0681(o) (419)356-6196 (m)
MEMBER SINCE 2013
mgarrison@curran-architecture.com
ARCHITECTURE



JOAN GIBBONS
DIRECTOR
ORTHOINDY
14093 Short Stone Pl.
Mccordsville, IN 46055-4462
(317)442-6979(o) (317)442-6979(m)
MEMBER SINCE 2016
gibbons.joan@att.net
PROPERTY MANAGEMENT



RHONDA GRAHAM
PARALEGAL—COMMERCIAL LENDING & REAL ESTATE
KRIEG DEVAULT LLP
12800 N. Meridian St., Ste. 300
Carmel, IN 46032
(317)238-6292(o) (317)965-0706(m)
MEMBER SINCE 2023
rgraham@kdlegal.com
LENDING/FINANCE

MEMBERS



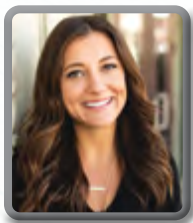
CECILIA GRAY
COMMERCIAL ESCROW OFFICER
FIRST AMERICAN TITLE INSURANCE COMPANY
211 N. Pennsylvania St., Ste. 1250
Indianapolis, IN 46204
(317)533-4010(o)
MEMBER SINCE 2024
cegray@firstam.com
TITLE/ESCROW



DONNA GRAY
CEO
MATCHBOOK, WBE
1317 N. Pennsylvania St.
Indianapolis, IN 46202
(317)523-5757(o)
MEMBER SINCE 2023
dgray@matchbookcreative.com
MARKETING/ADVERTISING



CHRISTOPHER HAGENOW
PARTNER
TUOHY BAILEY & MOORE LLP
50 S. Meridian St., Ste. 700
Indianapolis, IN 46204
(317)797-2763(o) (317)797-2763(m)
MEMBER SINCE 2016
chagenow@tbtorneys.com
LAW



CAROLINE HALL
BUSINESS DEVELOPMENT & MARKETING
REPRO GRAPHIX
PO Box 44026
Indianapolis, IN 46244-0026
(317)695-9559(o) (317)695-9559(m)
MEMBER SINCE 2019
chall@reprographix.com
PRINTING/SIGNAGE



BRANDI HANEY, CIDQ, RID
INTERIOR DESIGNER
CHAMPLIN ARCHITECTURE
20 N. Meridian St., Ste. 700
Indianapolis, IN 46204
(317)917-4474(108)(o)
MEMBER SINCE 2022
brandi.haney@thinkchamplin.com
INTERIOR DESIGN/SPACE PLANNING



A leader in multifamily and affordable housing finance,
providing debt and equity solutions nationwide.

Merchants Capital is ranked the **#2** Affordable Housing Lender nationwide.*

**Affordable Housing Finance 2022 Top Lenders survey.*

Innovating finance.
Elevating people.

317.569.7420
[MerchantsCapital.com](https://www.MerchantsCapital.com)



MEMBERS



KELLY HANEY
PRESIDENT
LINGOTEK SOLUTIONS
7346 Glenview Dr. E
Indianapolis, IN 46250-2454
(317)922-1436(o)
MEMBER SINCE 2019
kelly@lingotekinc.com
TECHNOLOGY



KIMBERLY HANSEN
VP FINANCE
OLD TOWN COMPANIES
31 1st St. SW
Carmel, IN 46032-2101
(317)507-7142(o)
MEMBER SINCE 2021
kimberly.hansen@oldtowncompanies.com
LENDING/FINANCE



SUSAN HARGROVE
VP SR. COMMERCIAL LENDER
HORIZON BANK
1216 W. Carmel Dr.
Carmel, IN 46032-8707
(317)833-9094(o) (317)833-9094(m)
MEMBER SINCE 2017
shargrove@horizonbank.com
LENDING/FINANCE



MADISON HARMAN
FIRST VP OF INVESTMENTS
THE YODER HARMAN GROUP
15128 Merritt Pass
Noblesville, IN 46062
(260)494-7213(o)
MEMBER SINCE 2024
madison.harman@marcusmillichap.com
BROKERAGE



CASEY HARRISON
CEO
POLISHED STRATEGIC COMMUNICATIONS, WBE
13205 Deception Pass, Unit 500
Fishers, IN 46038
(317)526-8722(o)
MEMBER SINCE 2024
casey@polishedcomms.com
MARKETING/ADVERTISING

MEMBERS



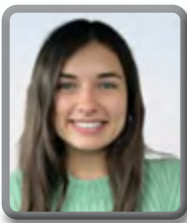
LAURA HAYNES
SVP—DIVISION MANAGER
COMMERCIAL REAL ESTATE LENDING
Stock Yards Bank & Trust
201 N. Illinois St., Ste. 400
Indianapolis, IN 46204-4232
(317)238-2830(o) (317)441-6950(m)
MEMBER SINCE 2017
laura.haynes@syb.com
LENDING/FINANCE



DEE HEADLEY, CPM, CCIM
DIRECTOR
CUSHMAN & WAKEFIELD
110 E. Chestnut St.
Crawfordsville, IN 47933
(317)236-6433(o) (317)945-2239(m)
MEMBER SINCE 2005
dee.headley@cushwake.com
PROPERTY MANAGEMENT



BRITTANY HEIDENREICH, PE
SENIOR PROJECT MANAGER
PURDUE RESEARCH FOUNDATION
1281 Win Hentschel Blvd.
West Lafayette, IN 47906
(317)605-4972(o) (317)605-4972(m)
MEMBER SINCE 2016
bnheidenreich@prf.org
ENGINEERING



ALIZABETH HICKS
TRANSACTION SPECIALIST
AUGUST MACK ENVIRONMENTAL INC.
1302 N. Meridian St.
Indianapolis, IN 46203
(517)315-7471(o)
MEMBER SINCE 2023
ahicks@augustmack.com
ENVIRONMENTAL



MORGAN HIGHUM
DEVELOPMENT AND CONSTRUCTION MANAGER
MIDLAND ATLANTIC PROPERTIES
3801 E. 82nd St., Ste. B
Indianapolis, IN 46240-4329
(317)205-4298(o) (317)205-4298(m)
MEMBER SINCE 2017
mhighum@midlandatlantic.us
DEVELOPMENT, REAL ESTATE

MEMBERS



CARLA HILL
DIRECTOR
SMITHGROUP
11722 Armada Ct.
Fishers, IN 46037
(317)979-8802(o)
MEMBER SINCE 2024
carla.hill@smithgroup.com
ARCHITECTURE



JENNIFER HILLMAN
GENERAL MANAGER
WASHINGTON PRIME GROUP
14390 Clay Terrace Blvd., Ste. 165
Carmel, IN 46032-3669
(317)818-0725(o) (317)828-6737(m)
MEMBER SINCE 2016
jjones@wpgus.com
ASSET MANAGEMENT



EMILY HILLYER
PROJECT INTERIOR DESIGNER
SCHOTT DESIGN, INC.
8888 Keystone Crossing, Ste. 100
Indianapolis, IN 46240-3776
(317)762-7840(o)
MEMBER SINCE 2020
ehillyer@schottdesign.com
INTERIOR DESIGN/SPACE PLANNING



JENNIFER HINDSLEY
COMMERCIAL MARKETING ASSOCIATE
CERTAPRO
8105 Center Run Rd.
Indianapolis, IN 46250
(317)968-9565(o) (317)694-6152(m)
MEMBER SINCE 2023
jhindsley@certapro.com
PAINTING CONTRACTOR



KRISTIN HORNBERGER
DIRECTOR OF MARKETING
CORNERSTONE COMPANIES, INC.
8902 N. Meridian St., Ste. 205
Indianapolis, IN 46260
(317)754-6244(o) (317)446-8144(m)
MEMBER SINCE 2019
khornberger@cornerstonecompaniesinc.com
BROKERAGE



HELPING OUR CLIENTS *TRANSFORM* COMMERCIAL REAL ESTATE WITH *EXCELLENCE*



MICHELLE JARVIS
Survey



JULIE CREWE-SCHILLING
Environmental

OUR SERVICES

- Civil Engineering*
- Landscape Architecture*
- Structural Engineering*
- Environmental*
- Highways & Traffic*
- Water Resources*
- Nature Based Solutions*
- Surveying*
- Wetlands & Ecology*
- Geosciences*
- Municipal Consulting*
- Contracting & Construction Management
- Construction Engineering
- Railroads
- Planning

**Local Indiana office expertise*

LOCAL OFFICES: CARMEL | INDIANAPOLIS | MARTINSVILLE | SOUTH BEND

V3CO.COM | 317.423.0690

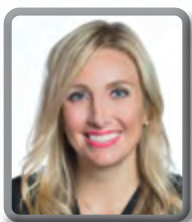
MEMBERS



DONNA HOVEY
LEASING MANAGER
TONN AND BLANK CONSTRUCTION, LLC
5453 N. Illinois St.
Indianapolis, IN 46208
(317)499-7008(o) (317)499-7008(m)
MEMBER SINCE 1998
donna.hovey@tonnandblank.com
BROKERAGE



TESSA HUETTL, EI
CIVIL ANALYST
KIMLEY-HORN AND ASSOCIATES, INC.
500 E. 96th St., Ste. 300
Indianapolis, IN 46240
(317)735-6424(o) (928)257-7796(m)
MEMBER SINCE 2022
tessa.huettl@kimley-horn.com
ENGINEERING



LAUREN HUGHES
VICE PRESIDENT OF BUSINESS DEVELOPMENT
CAPITOL CONSTRUCTION
1349 Chatham Ridge Ct.
Westfield, IN 46074
(317)574-5488(166)(o) (317)376-5860(m)
MEMBER SINCE 2011
lkruiner@capitolconstruct.com
DEVELOPMENT, REAL ESTATE



NIAMH HYNES
UNDERWRITING ANALYST
MERCHANTS CAPITAL CORP.
410 Monon Blvd., 5th Floor
Carmel, IN 46032
(617)901-1146(o) (617)901-1146(m)
MEMBER SINCE 2022
nhynes@merchantscapital.com
LENDING/FINANCE



MICHELLE JARVIS
SURVEY PROJECT COORDINATOR
V3 COMPANIES
494 Gradle Dr.
Carmel, IN 46032-2536
(317)844-3333(o) (317)698-4316(m)
MEMBER SINCE 2015
mjarvis@v3co.com
ENGINEERING

MEMBERS



JACINDA JOHNSON
NETWORKING REPRESENTATIVE
AUGUST MACK ENVIRONMENTAL INC.
1302 North Meridian St., Ste. 300
Indianapolis, IN 46204
(765)760-2736(o) (765)760-2736(m)
MEMBER SINCE 2024
jjohnson@augustmack.com
ENVIRONMENTAL



ERIN JONES, CPM
GENERAL MANAGER
ZELLER
201 N. Illinois St., Ste. 325
Indianapolis, IN 46204
(317)813-6103(o) (317)416-8883(m)
MEMBER SINCE 2020
ejones@zeller.us
PROPERTY MANAGEMENT



SAMANTHA JULKA
PRESIDENT
DORIS, WBE
535 E. Wabash St.
Indianapolis, IN 46204
(317)713-6364(o) (317)341-4551(m)
MEMBER SINCE 2018
sam@dorisresearch.com
CONSULTING



DANIELLE KAISER, JD
DEPUTY CHIEF UNDERWRITING COUNSEL
DOMA TITLE INSURANCE, INC.
12999 Macalister Trace
Carmel, IN 46033
(317)625-5605(o) (317)625-5605(m)
MEMBER SINCE 2017
danielle.kaiser@doma.com
TITLE/ESCROW



KAREN KARR
BUSINESS DEVELOPMENT
MIDWEST REMEDIATION
8010 E. 38th St.
Indianapolis, IN 46226
(317)339-2205(o) (317)339-2205(m)
MEMBER SINCE 2022
kkarr@goMWR.com
RESTORATION

MEMBERS



ANN KVALEC

VICE PRESIDENT
WESBANCO BANK, INC.

10201 North Illinois St., Ste. 140
Indianapolis, IN 46290
(317)582-0434(o) (317)582-0434(m)

MEMBER SINCE 2022
ann.kavalec@wesbanco.com
LENDING/FINANCE

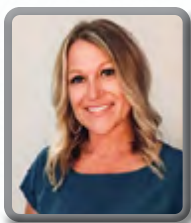


TAMMY KELLY

BROKER OWNER
KELLY COMMERCIAL REAL ESTATE

410 W. Oak St., Ste. 10A
Zionsville, IN 46077
(317)358-6656(o)

MEMBER SINCE 2022
tammy@kellycommercialre.com
BROKERAGE



CRYSTAL KENNARD

VICE PRESIDENT
THARP REALTY

6910 N. Shadeland Ave., Ste. 200
Indianapolis, IN 46220
(317)418-2464(o)

MEMBER SINCE 2022
ckennard@tharprealty.com
BROKERAGE



ABBY KICHURA, RPA, LEED, GREEN ASSOC.

GENERAL MANAGER
LILLIBRIDGE HEALTHCARE SERVICES, INC.

500 N. Hurstbourne Pkwy., Ste. 200
Louisville, KY 40222
(317)872-1622(o) (312)343-4935(m)

MEMBER SINCE 2021
abby.kichura@lillibridge.com
PROPERTY MANAGEMENT



VEE KIMBRELL

EVP, MARKETING & AMP; COMMUNICATIONS
KENNMAR

3500 DePauw Blvd., Suite 2060
Indianapolis, IN 46268
(317)661-4815(o) (404)452-1481(m)

MEMBER SINCE 2021
veekimbrell@gmail.com
DEVELOPMENT, REAL ESTATE

**BUSINESS
FURNITURE
+CO**

work
learn
heal
better

Rebecca Dean



deanr@businessfurniture.net



businessfurniture.net



MEMBERS



KIMBER KINSLEY
MANAGING DIRECTOR
CBRE, INC.

8888 Keystone Crossing, Ste. 1000
Indianapolis, IN 46240
(317)269-1070(o) (720)394-3853(m)

MEMBER SINCE 2022
kimber.kinsley@cbre.com
BROKERAGE



RALPH KNAUSS
FOUNDER/CEO
KNAUSS PROPERTY SERVICES, LLC

2817 55th Pl.
Indianapolis, IN 46220-3688
(317)255-9789(o) (317)590-8750(m)

MEMBER SINCE 2016
rknauss@propertieservices.com
PROPERTY MAINTENANCE



ROBERT KORT
OWNER/PRESIDENT
KORT BUILDERS INC.

8709 Castle Park Dr.
Indianapolis, IN 46256-1272
(317)872-4181(o)

MEMBER SINCE 2016
bkort@kortbuilders.com
CONSTRUCTION MANAGEMENT/GENERAL CONTRACTING



DENISE KOURIL
COMMERCIAL ACCOUNT MANAGER
MERIDIAN TITLE CORPORATION

3850 Priority Way South Dr., Ste. 120
Indianapolis, IN 46240
(317)571-3330(o) (317)750-4545(m)

MEMBER SINCE 2007
dkouril@meridiantitle.com
TITLE/ESCROW



MADELINE KRUEGER
CIVIL ANALYST
KIMLEY-HORN AND ASSOCIATES, INC.

500 E. 96th St., Ste. 300
Indianapolis, IN 46240
(317)912-4608(o) (630)808-2869(m)

MEMBER SINCE 2023
madeline.krueger@kimley-horn.com
ENGINEERING

MEMBERS



SARAH KUESTER, CAE
EXECUTIVE DIRECTOR
BOMA INDIANA
101 W. Ohio St., Fl 20th
Indianapolis, IN 46204-4204
(317)518-7060(o) (317)518-7060(m)
MEMBER SINCE 2015
sarah@bomaindy.org
PUBLIC SECTOR



DEBRA KUNCE, FAIA
VICE PRESIDENT
J.S. HELD LLC
429 N. Pennsylvania St., Ste. 304
Indianapolis, IN 46204
(317)981-7257(o) (317)447-5531(m)
MEMBER SINCE 2022
dkunce@jsheld.com
PROGRAM MANAGEMENT/PROJECT MANAGEMENT



BRITTNEY LANE
ACCOUNT MANAGER, CLIENT SOLUTIONS
CRESA
167 N. Green St., Ste. 1301
Chicago, IL 60607
(323)552-3537(o) (323)552-3537(m)
MEMBER SINCE 2023
blane@cresa.com
BROKERAGE



LESLIE LANE, MBA
PRESIDENT
STUDIO 13
705 Elmwood Cir.
Noblesville, IN 46062-8540
(317)440-6232(o)
MEMBER SINCE 2018
lesle@studio13online.com
PHOTOGRAPHY



ALEXA LARSON
BROKERAGE DIRECTOR
ALO PROPERTY GROUP
9075 N. Meridian St., Ste. 175
Indianapolis, IN 46260-2366
(317)853-7500(o) (317)258-1562(m)
MEMBER SINCE 2018
alexa@alopg.com
BROKERAGE

MEMBERS



CRYSTAL LAWRENCE
SENIOR PROPERTY MANAGER
KENNMAR

3500 Depauw Blvd.
Indianapolis, IN 46268
(317)735-3101(o)
MEMBER SINCE 2024
clawrence@kenmar.com
ASSET MANAGEMENT



FAITH LEININGER
BUSINESS DEVELOPMENT
VALBRIDGE PROPERTY ADVISORS

6801 Lake Plaza Dr., Ste. C-301
Indianapolis, IN 46220
(317)417-0708(o)
MEMBER SINCE 2024
fleininger@valbridge.com
APPRAISAL



CHELSEA LEITER-THOMPSON
VICE PRESIDENT OF DEVELOPMENT
BROWNING REAL ESTATE PARTNERS

8940 River Crossing Blvd., Ste. 300
Indianapolis, IN 46240
(727)418-5708(o) (727)418-5708(m)
MEMBER SINCE 2017
cthompson@browningrep.com
DEVELOPMENT, REAL ESTATE



MARY LEWEN
COMMERCIAL CREDIT UNDERWRITER III
STAR FINANCIAL RESOURCES

46 Monument Cir.
Indianapolis, IN 46204
(317)566-7312(o) (812)361-0822(m)
MEMBER SINCE 2024
mary.lewen@starfinancial.com
LENDING/FINANCE



JENNIFER LEWIS
SENIOR PROJECT DIRECTOR
KCG DEVELOPMENT, LLC

975 Harvest Ridge Dr.
Avon, IN 46123-7142
(317)529-7764(o) (317)513-1912(m)
MEMBER SINCE 2014
jenlewis1@yahoo.com
BROKERAGE

MEMBERS



PENELOPE LEWIS, CFP
VICE PRESIDENT/EMERGING MARKETS
HUNTINGTON BANK
45 N. Pennsylvania St., Ste. 300
Indianapolis, IN 46204
(317)201-3419(o)
MEMBER SINCE 2022
penny.lewis@huntington.com
LENDING/FINANCE



GINA LONGERE
REAL ESTATE COMMERCIAL CLOSER
FIRST AMERICAN TITLE INSURANCE COMPANY
251 E. Ohio St., Ste. 200
Indianapolis, IN 46204-2281
(317)684-7556(o)
MEMBER SINCE 2002
glongere@firstam.com
TITLE/ESCROW



KATE LOUGHNANE
FHA UNDERWRITER
MERCHANTS CAPITAL
410 Monon Blvd., Fl 5
Carmel, IN 46032-2345
(317)324-4816(o) (317)385-6963(m)
MEMBER SINCE 2017
kloughnane@merchantscapital.com
LENDING/FINANCE



CATHERINE LUKEMEYER
DIRECTOR OF FINANCE
JQOL
8440 Allison Pointe Blvd., Ste. #425
Indianapolis, IN 46250
(828)398-8531(o) (828)398-8531(m)
MEMBER SINCE 2020
clukemeyer@jqolusa.com
LENDING/FINANCE



MELISSA LUTZ, FSMPS, CPSM
PRINCIPAL/DIRECTOR OF MARKETING
CHAMPLIN ARCHITECTURE
6413 Paxton Woods Dr.
Loveland, OH 45140-8131
(513)241-4474(116)(o) (513)708-1505(m)
MEMBER SINCE 2022
melissa.lutz@thinkchamplin.com
ARCHITECTURE

MEMBERS



PAUL MABRY

BROKER

KAIZEN REAL ESTATE ADVISORS

1800 N. Meridian St., Ste. 100

Indianapolis, IN 46202

(317)937-2835(o)

(317)937-2835(m)

MEMBER SINCE 2023

paul@kaizenrea.com

BROKERAGE



KATHRYN MADAJ

CORPORATE BUSINESS DEVELOPMENT

CHA CONSULTING, INC.

201 N. Illinois St., Ste. 800

Indianapolis, IN 46204

(800)321-6959(o)

(317)306-8292(m)

MEMBER SINCE 2018

kmadajvchacompanies.com

ENGINEERING



TERESA MANCUSO, CPM

ALLIANCE DIRECTOR

CBRE, INC.

13360 Olivewood Cir.

Carmel, IN 46032-8370

(312)560-1919(o)

(312)560-1919(m)

MEMBER SINCE 2021

teresa.mancuso@cbre.com

PROPERTY MANAGEMENT



MEGAN MARTIN

SENIOR ADVISOR

CRESA

3820 Nesbitt Rd.

Indianapolis, IN 46220

(317)454-7171(o)

(317)938-3321(m)

MEMBER SINCE 2019

mmartin@cresa.com

BROKERAGE



MEGAN MAXWELL-RANJBAR

FHA UNDERWRITER

MERCHANTS CAPITAL CORP.

410 Monon Blvd., Floor 5

Carmel, IN 46032

(812)583-2124(o)

MEMBER SINCE 2023

mmaxwell-ranjbar@merchantscapital.com

LENDING/FINANCE

A STRATEGIC AGENCY SERVING UP MARKETING CAMPAIGNS, BRANDS, AND INSIGHT.

Get Smarter About Marketing Each Week.

Subscribe to **The Spark** at mtchbk.com/spark



mtchbk.

MEMBERS



MARIANNE MCCALIP

REAL ESTATE MANAGER

LAMAR ADVERTISING

5711 West Minnesota
Indianapolis, IN 46241
(317)362-0277(o)

MEMBER SINCE 2023

mmccalip@lamar.com

MARKETING/ADVERTISING



CJ MCCLANAHAN

PRINCIPAL

CJ MCCLANAHAN

5750 Castle Creek Pkwy., #367
Indianapolis, IN 46250
(317)697-2262(o)

MEMBER SINCE 2024

cj@cjmclanahan.com

PUBLIC SPEAKING



JENNIFER MCNETT, CPA

RE & CONSTRUCTION TAX SENIOR MANAGER

CROWE LLP

3815 River Crossing Pkwy., Ste. 300
Indianapolis, IN 46240-7767

(317)208-2510(o) (317)531-3400(m)

MEMBER SINCE 2018

jennifer.mcnett@crowe.com

ACCOUNTING



GRETCHEN MENSCH, CPM

EXECUTIVE VICE PRESIDENT

CORNERSTONE COMPANIES, INC.

8902 N. Meridian St., Ste. 205
Indianapolis, IN 46260-5369

(317)288-9003(o) (317)714-1021(m)

MEMBER SINCE 2016

gmensch@cornerstonecompaniesinc.com

ASSET MANAGEMENT



AMANDA MEZA

BUSINESS BANKER

HORIZON BANK

655 3rd St.
Columbus, IN 47201

(812)418-5200(o)

MEMBER SINCE 2023

AMeza@horizonbank.com

LENDING/FINANCE

MEMBERS



BEVERLY MILLER

PRESIDENT

A SIGN BY DESIGN, INC.

PO Box 691

Zionsville, IN 46052

(317)876-7900(o)

(317)590-5950(m)

MEMBER SINCE 2013

bevm@asignbydesign.com

PRINTING/SIGNAGE



SUSAN MONIK

BUSINESS BANKING RELATIONSHIP MANAGER

FIFTH THIRD BANK

251 N. Illinois St., Floor 10

Indianapolis, IN 46204-1941

(317)383-2275(o)

(317)385-0395(m)

MEMBER SINCE 2023

susan.monik@53.com

LENDING/FINANCE



JENNIFER MRZLACK

PRESIDENT

PSG ENERGY GROUP

PSG Energy Group

905 N. Capitol Ave., Ste. 200

Indianapolis, IN 46204

(317)892-8195(o)

(317)697-3250 (m)

MEMBER SINCE 2024

info@psgenergygroup.com

SOLAR



MEGAN NAGEL, CPM, CAPS, & ACOM

REAL ESTATE MANAGER

HENDRICKS COMMERCIAL PROPERTIES

2127 Pleasant St.

Indianapolis, IN 46203-1424

(414)975-2617(o)

(414)975-2617(m)

MEMBER SINCE 2018

megan.nagel@hendricksgroup.net

PROPERTY MANAGEMENT



SHELLEY NESCOLA

BUSINESS CONSULTANT

CHICAGO TITLE

6910 E. 96th St., Ste. 100

Indianapolis, IN 46250

(317)440-0539(o)

MEMBER SINCE 2023

shelley.nescola@ctf.com

TITLE/ESCROW

MEMBERS



CASSANDRA NIELSEN, ESQ.

**COUNSEL TO THE FIRM
STOLL KEENON OGDEN**

334 North Senate Ave.
Indianapolis, IN 46204
(317)396-2553(o)

MEMBER SINCE 2023
cassie.nielsen@skofirm.com
LAW



TIFFANY O'BRIEN

**OWNER
ULTIMATE TECHNOLOGIES GROUP**

11795 Technology Ln.
Fishers, IN 46038
(317)864-8617(o)

MEMBER SINCE 2023
tiffany@ultimatetechnologiesgroup.com
TECHNOLOGY



JANICE PAINE, CCIM

**VP P&C COMMERCIAL REAL ESTATE
USI INSURANCE**

4408 Dunsany Cir., Ste. 150
Indianapolis, IN 46254-3663
(317)345-9243(o) (317)345-9243(m)

MEMBER SINCE 2001
janice.paine@usi.com
COMMERCIAL INSURANCE



REBEKAH PAYNE, CPA

**PARTNER
MCM CPAS & ADVISORS LLC**

9229 Delegates Row, Ste. 250
Indianapolis, IN 46240
(317)224-1278(o) (317)372-4860(m)

MEMBER SINCE 2022
rebekah.payne@mcmcpa.com
ACCOUNTING



SCOTT PEREZ, AIA, NCARB, CSI, CCS, CCCA, MBA, CBO, CBE, RID

**PRESIDENT
ARX 360, INC.**

6015 Orchard Hill Ln.
Indianapolis, IN 46220
(317)520-2558(o) (317)488-8888(m)

MEMBER SINCE 2022
scott@arx3sixty.com
ARCHITECTURE

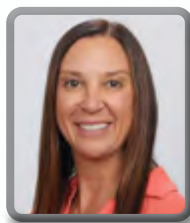
MEMBERS



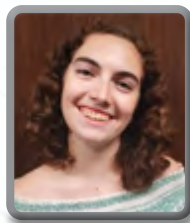
JULIE PETTYPOOL
DEVELOPMENT ASSOCIATE
BROWNING REAL ESTATE PARTNERS
8940 River Crossing Blvd., Ste. 300
Indianapolis, IN 46240
(317)374-2578(o) (317)374-2578(m)
MEMBER SINCE 2018
jpettypool@browningrep.com
DEVELOPMENT, REAL ESTATE



BETSY PHILLIPS
MANAGING DIRECTOR/SYNDICATIONS
OLD NATIONAL BANK
900 E. 96th St., Ste. 500
Indianapolis, IN 46032
(317)800-9190(o)
MEMBER SINCE 2024
betsy.phillips@oldnational.com
LENDING/FINANCE



TONIA PIPPIN
SENIOR ENVIRONMENTAL PROJECT MANAGER
CIVIL & ENVIRONMENTAL CONSULTANTS, INC. (CEC)
11 Municipal Dr.
Fishers, IN 46038
(317)605-7184(o) (317)605-7184(m)
MEMBER SINCE 2024
toniapippin@hotmail.com
ENVIRONMENTAL



KATHERINE POLACK
CIVIL ANALYST
KIMLEY-HORN AND ASSOCIATES, INC.
500 E. 96th St., Ste. 300
Indianapolis, IN 46240
(317)268-5817(o) (317)968-0890(m)
MEMBER SINCE 2022
Kate.Polack@kimley-horn.com
ENGINEERING



KRISTIN QUINTANA
FHA SENIOR UNDERWRITER
MERCHANTS CAPITAL
5921 E. 75th St.
Indianapolis, IN 46250-2766
(574)329-2644(o) (574)329-2644(m)
MEMBER SINCE 2018
kquintana@merchantscapital.com
LENDING/FINANCE

MEMBERS



SHOKRINA RADPOUR BEERING, ESQ.
GENERAL COUNSEL & CHIEF COMPLIANCE OFFICER
US AGRICULTURE
12821 E. New Market St., Ste. 300
Carmel, IN 46032
(317)650-4007(o) (317)650-4007(m)
MEMBER SINCE 2001
shokrina.beering@us-agriculture.com
LAW



KATHERINE RARICK
ATTORNEY
WALLACK SOMERS & HAAS P.C.
1 Indiana Sq., Ste. 2300
Indianapolis, IN 46204-2012
(317)231-9000(o) (317)432-6205(m)
MEMBER SINCE 2012
kwr@wshlaw.com
LAW



CAROLINA RASHIDFAROKHI
ATTORNEY/OWNER
CR LAW LLC
15676 Bodrum Dr.
Fishers, IN 46040
(317)938-7679(o)
MEMBER SINCE 2024
carolina.rashidfarokhi@gmail.com
LAW



ANASTASIA REINHOLT
STUDENT
STUDENT MEMBER
6411 North Caldwell Rd.
Lebanon, IN 46052
(765)577-1282(o) (765)577-1282(m)
MEMBER SINCE 2024
anastasia.reinholt@gmail.com
UNDERGRADUATE STUDENT MEMBER



BONNIE RILEY
ASSISTANT VP, EXECUTIVE BANKER | BUSINESS
DEVELOPMENT OFFICER
COMMUNITY FIRST BANK OF INDIANA
9333 N. Meridian St., Ste. 125
Indianapolis, IN 46260
(317)763-5232(o) (219)869-0161(m)
MEMBER SINCE 2021
briley@cfbindiana.com
LENDING/FINANCE

Polished

STRATEGIC COMMUNICATIONS



Your story is at
the epicenter of
our approach.



Content Development
Digital Strategy
Media Relations
& More.

PolishedComms.com

MEMBERS



KYRA RIMSANS, JD
GENERAL COUNSEL
FLAHERTY & COLLINS PROPERTIES
1 Indiana Sq., Ste. 3000
Indianapolis, IN 46204-2063
(317)819-2714(o)
MEMBER SINCE 2012
krimsans@flco.com
LAW



WHITNEY ROBERTS
DIRECTOR
92C PARTNERS, WBE
3950 Priority Way South Dr., Ste. 112
Indianapolis, IN 46240
(317)914-7978(o) (317)914-7978(m)
MEMBER SINCE 2019
whitney@92cpartners.com
BROKERAGE



ALEXIS ROGGE
COMMERCIAL ARCHITECTURE DESIGN ASSOCIATE
AMERICAN STRUCTUREPOINT, INC.
9025 River Rd., Ste. 200
Indianapolis, IN 46240
(317)547-5580(o) (219)781-5448(m)
MEMBER SINCE 2023
arogge@structurepoint.com
ARCHITECTURE



JILL ROSE, RID, IIDA
PRINCIPAL, BUSINESS DEVELOPMENT
LUMINAUT
7012 Bluffgrove Ln.
Indianapolis, IN 46278
(317)902-6006(o) (317)902-6006(m)
MEMBER SINCE 2012
jrose@luminaut.com
INTERIOR DESIGN/SPACE PLANNING



ALLIE ROSENBARGER
PRINCIPAL/OWNER
JANI DEVELOPMENT COMPANY
1060 N. Capitol Ave., Ste. 3-101
Indianapolis, IN 46204
(317)410-1792(o) (317)410-1792(m)
MEMBER SINCE 2023
allievanidevco.com
DEVELOPMENT, REAL ESTATE

MEMBERS



CASEY RUSSO

VICE PRESIDENT

YOUNG & SONS ASPHALT PAVING, INC.

6280 S. Cozy Ln.

Whitestown, IN 46075

(317)769-2238(o)

(317)900-6406(m)

MEMBER SINCE 2023

casey@youngsasphalt.com

ASPHALT SERVICES



CHERYL SAALFRANK, R.P.

PARALEGAL

SCANNELL PROPERTIES

8801 River Crossing Blvd., Ste. 300

Indianapolis, IN 46240-2394

(317)218-1662(o)

(317)755-8096(m)

MEMBER SINCE 2014

cheryls@scannellproperties.com

LAW



SOUHEIR SALFITY

REAL ESTATE MANAGER

IRONWORKS AT KEYSTONE

2727 East 86th St., Ste. 100

Indianapolis, IN 46240

(317)489-6987(o)

(317)371-7570(m)

MEMBER SINCE 2023

Souheir.Salfity@hendricksgroup.net

PROPERTY MANAGEMENT



MICHELLE SCHAEFER

VP, COMMERCIAL BANKING

JACKSON COUNTY BANK

2761 Central Ave.

Columbus, IN 47201-3124

(812)378-2764(o)

(812)528-2058(m)

MEMBER SINCE 2017

mschaefer@jcbank.com

LENDING/FINANCE



KATY SCHMIDT, CAM

VP OF RESIDENTIAL MANAGEMENT

HENDRICKS COMMERCIAL PROPERTIES

2727 E. 86th St.

Indianapolis, IN 46240-4394

(317)489-6987(o)

(608)931-3389(m)

MEMBER SINCE 2018

Katy.Schmidt@hendricksgroup.net

PROPERTY MANAGEMENT

MEMBERS



BRIANNE SCHNECKENBERGER

**DIRECTOR OF ACCOUNTING
BROWNING REAL ESTATE PARTNERS**

8940 River Crossing Blvd., Ste. 300
Indianapolis, IN 46240
(812)243-4048(o) (812)243-4048(m)

MEMBER SINCE 2021

bschneckenberger@browninginv.com

ACCOUNTING



VICTORIA SCHUMAN

**NATIONAL ACCOUNT MANAGER
CHADWELL SUPPLY**

757 Massachusetts Ave., Unit 202
Indianapolis, IN 46204-1682
(260)894-2751(o) (260)894-2751(m)

MEMBER SINCE 2012

Victoria.Schuman@ChadwellSupply.com

PROPERTY MAINTENANCE



KELLIE SEABROOKS

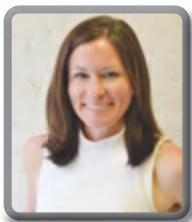
**VICE PRESIDENT OF STRATEGIC INNOVATION
& CUSTOMER ENGAGEMENT**

RJE BUSINESS INTERIORS
621 E. Ohio St.
Indianapolis, IN 46202
(317)372-7189(o) (317)372-7189(m)

MEMBER SINCE 2017

kseabrooks@rje-bi.com

INTERIOR DESIGN/SPACE PLANNING



ADRIENNE SEARCY, IIDA, NCIDQ, CID MD, RID (IN), LEED AP ID + C

**INTERIOR DESIGNER
ARRIS, A DESIGN STUDIO, INC.**

1649 Thames St., Ste. 400
Baltimore, MD 21201
(240)301-2628(o)

MEMBER SINCE 2023

adrienne@arrisdesign.com

INTERIOR DESIGN/SPACE PLANNING



CARRIE SERMERSHEIM, CPSM

**PROJECT DEV. | ARCHITECTURE + INTERIORS
AMERICAN STRUCTUREPOINT, INC.**

9025 River Rd.
Indianapolis, IN 46240
(317)547-5580(o) (317)416-4731(m)

MEMBER SINCE 2015

csermersheim@structurepoint.com

ARCHITECTURE

CUSHMAN &

LIFE IS WHAT **WE** MAKE IT



As a global leader in commercial real estate services, we make the most of every opportunity life offers—for our people, clients, communities and planet. With nearly five billion

square feet of property under management and 50,000 employees in 60 countries, we make an impact around the world. Explore more at cushmanwakefield.com.

WAKEFIELD



FORUM'S COMMERCIAL REAL ESTATE LOAN

can support your **business needs.**

Visit forumcu.com to learn more.



MEMBERS



JENNIFER SEWELL
VICE PRESIDENT OF DEVELOPMENT
CITYSCAPE RESIDENTIAL
10 W. Carmel Dr.
Carmel, IN 46032
(317)619-6962(o)
MEMBER SINCE 2023
jsewell@cityscaperesidential.com
DEVELOPMENT, REAL ESTATE



LEXI SIEGLER
MARKETING MANAGER
BECKNELL INDUSTRIAL
2750 East 146th St., #200
Carmel, IN 46033
(317)805-1244(o) (317)450-6491(m)
MEMBER SINCE 2022
lsiegler@becknellindustrial.com
DEVELOPMENT



MARY SLADE
LEGAL COUNSEL
METROPOLITAN TITLE COMPANY
8420 N. Park Ave.
Indianapolis, IN 46240-2242
(317)869-2436(o) (317)869-2436(m)
MEMBER SINCE 2010
mslade@metrotci.com
LAW



MONICA SLIGER, CPM
PROPERTY MANAGER
CORNERSTONE COMPANIES, INC.
12073 Flagstone Dr.
Fishers, IN 46037
(317)501-1624(o) (317)501-1624(m)
MEMBER SINCE 2022
indymona@gmail.com
PROPERTY MANAGEMENT

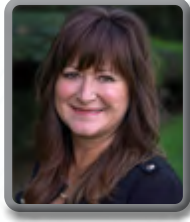


JENELLE SMAGALA
PRESIDENT
SYNTHESIS INCORPORATED
251 N. Illinois St., Ste. 200
Indianapolis, IN 46204-1975
(317)951-9500(o)
MEMBER SINCE 2019
smagala@synthinc.com
ARCHITECTURE

MEMBERS



ANGELA SMITH
DEVELOPMENT MANAGER
CONTOUR LAND GROUP
628 E. Parent Ave., Ste. 100
Royal Oak, MI 48067
(317)910-0930(o)
MEMBER SINCE 2023
asmith@contourlandgroup.com
PROGRAM MANAGEMENT/PROJECT MANAGEMENT



DEANNA SMITH
SENIOR PROPERTY MANAGER
LINK LOGISTICS
2516 N. College Ave.
Indianapolis, IN 46205
(949)246-2882(o)
MEMBER SINCE 2024
dsmith@linklogistics.com
PROPERTY MANAGEMENT



ELLIOTT SOMERS
VP—RELATIONSHIP MANAGER & REGIONAL BUSINESS
DEVELOPMENT DIRECTOR
CITIZENS STATE BANK
12720 Hearthstone Dr.
Fishers, IN 46037-8451
(765)760-8372(o) (765)760-8372(m)
MEMBER SINCE 2019
esomers@townfin.com
LENDING/FINANCE



LESLIE STEINERT, MBA
VICE PRESIDENT
LANDWORX ENGINEERING, LLC
958 E. Washington St., Ste. 100
Indianapolis, IN 46202-3987
(317)616-0177(o) (317)488-7104(m)
MEMBER SINCE 2017
leslie.steinert@landworxeng.com
ENGINEERING



ALEXANDRA "ALI" SYLVIA
PARTNER
PLEWS SHADLEY RACHER & BRAUN LLP
1346 N. Delaware St.
Indianapolis, IN 46202-2415
(317)637-0700(o) (317)431-1290(m)
MEMBER SINCE 2009
asylvia@psrb.com
LAW

MEMBERS



JESSICA TAYLOR

REAL ESTATE MANAGER

TONN AND BLANK CONSTRUCTION, LLC

5721 Progress Rd.

Indianapolis, IN 46241-4334

(317)423-1020(128)(o) (463)202-5326(m)

MEMBER SINCE 2021

jessica.taylor@tonnandblank.com

PROPERTY MANAGEMENT



LESLIE TESKEY, WBE

MANAGING PRINCIPAL/TENANT REPRESENTATIVE

CRESA, WBE

8935 N. Meridian St., Ste. 103

Indianapolis, IN 46260-5348

(317)695-6925(o) (317)695-6925(m)

MEMBER SINCE 2008

lteskey@cresa.com

BROKERAGE



SHARON THOMPSON, EDM, MA

EXECUTIVE DIRECTOR

KW COMMERCIAL

8555 River Rd., Ste. 200

Indianapolis, IN 46240-4304

MEMBER SINCE 2014

sharonthompson@kw.com

BROKERAGE



ABBEY TITZER

ASSOCIATE PROJECT MANAGER

SIKICH, LLP

8555 River Rd. Ste. 300

Indianapolis, IN 46240

(317)864-7766(o)

MEMBER SINCE 2024

abbey.titzer@sikich.com

CONSULTING



ANDREA TOWNSEND, JD

ASSOCIATE

PLEWS SHADLEY RACHER & BRAUN LLP

1346 N. Delaware St.

Indianapolis, IN 46202-2415

(317)637-0700(o) (765)427-0341(m)

MEMBER SINCE 2020

atownsend@psrb.com

LAW

A

AMBROSE

Redefining what's possible.

Ambrose is proud to support IndyCREW and their mission to transform the CRE industry by advancing women through mentorship, education and leadership.



AMBROSEPG.COM

CREATING COMMUNITIES WHERE
PEOPLE FLOURISH

OLD
TOWN
— COS. —

OLDTOWNCOMPANIES.COM

MEMBERS



WHITNEY TURSO

ACCOUNT EXECUTIVE

AMERICAN SOUND - INDY

6500 Technology Center Dr., Ste. 300

Indianapolis, IN 46278

(859)802-1159(o)

(317)250-9714(m)

MEMBER SINCE 2023

whitneyturso@asei.cc

TECHNOLOGY



LESLIE WAGNER

SENIOR PRINCIPAL

GINOVUS

9 Municipal Dr., Ste. 1

Fishers, IN 46038-1629

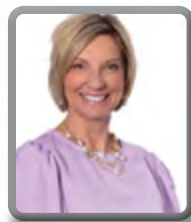
(317)819-4412(o)

(317)460-4676(m)

MEMBER SINCE 2008

leslie@ginovus.com

ECONOMIC DEVELOPMENT



KIM WALKER

SENIOR RELATIONSHIP MGR - PERSONAL BANKER

FORUM CREDIT UNION

PO Box 50738

Indianapolis, IN 46250

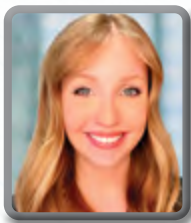
(317)809-4601(o)

(317)809-4601(m)

MEMBER SINCE 2021

kim.walker@forumcu.com

LENDING/FINANCE



SARAH WALKER

LEASING ASSISTANT

ZELLER

11611 N. Meridian St.

Carmel, IN 46032

(317)807-2403(o)

MEMBER SINCE 2022

swalker@zeller.us

BROKERAGE



RHIANNON WALTMAN

COMMERCIAL ESCROW OFFICER

FIRST AMERICAN TITLE INSURANCE COMPANY

211 N. Pennsylvania St., Ste. 1250

Indianapolis, IN 46204-1959

(317)616-7318(o)

(317)490-0218(m)

MEMBER SINCE 2014

rwaltman@firstam.com

TITLE/ESCROW



**COMMERCIAL
REAL ESTATE
LENDING**

Laura Haynes
Division Manager
(317) 238-2830

**Stock
Yards
Bank
&
Trust**

Since 1904

Member FDIC

**MAKE DATA-DRIVEN
DECISIONS ABOUT
YOUR WORKSPACE**

dorisresearch.com



Healthcare/Wellness
Restaurants
Industrial
Offices
Retail

Robert M. Kort
CEO



Builders, Inc
Commercial Contractors

8709 Castle Park Drive, Indianapolis, IN 46256
(317) 872-4181 DIRECT (317) 288-5825
bkort@kortbuilders.com

kortbuilders.com

MEMBERS



CATHY WATKINS

**TERRITORY SALES MANAGER - INDIANA | KENTUCKY
HAWORTH INC.**

One Haworth Center
Holland, MI 49423-9576
(317)250-0301(o)

MEMBER SINCE 2024

cathy.watkins@haworth.com

INTERIOR DESIGN/SPACE PLANNING



JULIE WEISENBACH

**VP, TALENT & CULTURE
AMBROSE PROPERTY GROUP, MBE**

8888 Keystone Xing., Ste. 1150
Indianapolis, IN 46240-4621
(317)640-5104(o) (317)640-5104(m)

MEMBER SINCE 2021

jweisenbach@ambrosepg.com

CRE HUMAN RESOURCES



ANGELA WETHINGTON, CCIM, JD

**DIRECTOR, CAPITAL GROUP
SCANNELL PROPERTIES**

8801 River Crossing Blvd., Ste. 300
Indianapolis, IN 46240-2394
(317)218-1668(o) (317)496-6667(m)

MEMBER SINCE 2014

angiew@scannellproperties.com

ACQUISITIONS/DISPOSITIONS



EVE WILKERSON

**VICE PRESIDENT
FIRST INTERNET BANK**

11201 USA Pkwy.
Fishers, IN 46037-9202
(317)372-7822(o) (317)372-7822(m)

MEMBER SINCE 2021

ewilkerson@firsttib.com

LENDING/FINANCE



ERICA WILLIAMS, JD

**COUNSEL
QUARLES & BRADY LLP**

411 E. Wisconsin Ave., Ste. 2400
Milwaukee, WI 53202
(317)399-2865(o)

MEMBER SINCE 2023

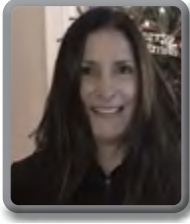
erica.williams@quarles.com

LAW

MEMBERS



MINDY WINKLER
BRAND AMBASSADOR
KNAUSS PROPERTY SERVICES, LLC
2817 E. 55th Pl.
Indianapolis, IN 46220
(317)800-3799(o) (317)402-8615(m)
MEMBER SINCE 2022
mindy.winkler@propertyservices.com
PROPERTY MAINTENANCE



LORENE WRIGHT
PERIPHERAL DEVELOPER
SIMON PROPERTY GROUP
225 W. Washington St.
Indianapolis, IN 46204
(317)319-6687(o)
MEMBER SINCE 2024
lwright@simon.com
DEVELOPMENT, REAL ESTATE



DIANA ZAGORZHEVSKIY
SENIOR DIRECTOR
CUSHMAN & WAKEFIELD
One American Square, Ste. 1800
Indianapolis, IN 46282
(317)518-6257(o)
MEMBER SINCE 2023
dianazagorzhevskiy@yahoo.com
DEVELOPMENT, REAL ESTATE



**FIRST MERCHANTS
COMMERCIAL BANKING**

No matter the stage or size of your business, we'll provide the right solutions to fit your needs. Our attentive and accessible bankers will work with you, adapting to your unique circumstances. Your success will be facilitated by an effectively tailored plan to help you grow. Call us at 1.800.205.3464 or check us out at firstmerchants.com/commercial

 **First Merchants Bank**
Helping you prosper

MEMBER 

Money doesn't make you wealthy.
Understanding it does.

Let's Talk.



WesBanco Bank, Inc. is a Member FDIC.



Ann Kavalec
VP Commercial Lender
317-582-0434

www.wesbanco.com



Areas of Specialty

- *Office Tenant Improvement
- *Restaurants/Hospitality
- *Ground Up Development
- *National Retail
- *Auto

Lauren Hughes

Vice President of Business Development

317.376.5860

lhughes@capitolconstruct.com

www.capitolconstruct.com



THE SOLID CHOICE
Your Premier Painting Partner.

PAINTING. FLOOR COATINGS.

317.423.0000 | ConnorPainting.com

WBE / MBE Certified



— 2024 —

Specialty Directory

SPECIALTIES & MEMBERS

ACCOUNTING

ASHLEY CHRISTIE, CPA PARTNER

KATZ SAPPER & MILLER

800 E. 96th St., Ste. 500
Indianapolis, IN 46240-4570
(317)428-1188(o) (317)432-5023(m)
achristie@ksmcpa.com

JENNIFER MCNETT, CPA RE & CONSTRUCTION TAX SENIOR MANAGER **CROWE LLP**

3815 River Crossing Pkwy., Ste. 300
Indianapolis, IN 46240-7767
(317)208-2510(o) (317)531-3400(m)
jennifer.mcnett@crowe.com

REBEKAH PAYNE, CPA PARTNER

MCM CPAS & ADVISORS LLC

9229 Delegates Row, Ste. 250
Indianapolis, IN 46240
(317)224-1278(o) (317)372-4860(m)
rebekah.payne@mcmcpa.com

BRIANNE SCHNECKENBERGER DIRECTOR OF ACCOUNTING **BROWNING REAL ESTATE PARTNERS**

8940 River Crossing Blvd., Ste. 300
Indianapolis, IN 46240
(812)243-4048(o) (812)243-4048(m)
bschneckenberger@browninginv.com

ACQUISITIONS/DISPOSITIONS

KARLA BURCK EXECUTIVE VP— DEVELOPMENT **KCG DEVELOPMENT, LLC**

9311 N. Meridian St., Ste. 100
Indianapolis, IN 46260-1865
(317)452-3729(o) (317)452-3729(m)
karla.burck@kcgcompanies.com

JULIA EVINGER

FIRST VP INVESTMENTS, DIRECTOR, NATIONAL OFFICE & INDUSTRIAL PROPERTY GROUP

MARCUS & MILLICHAP

600 E. 96th St., Ste. 500
Indianapolis, IN 46240
(317)218-5366(o) (317)437-6544(m)
julia.evinger@marcusmillichap.com

ANGELA WETHINGTON, CCIM, JD DIRECTOR, CAPITAL GROUP **SCANNELL PROPERTIES**

8801 River Crossing Blvd., Ste. 300
Indianapolis, IN 46240-2394
(317)218-1668(o) (317)496-6667(m)
angiew@scannellproperties.com

APPRAISAL

RACHELE CAGLE

CERTIFIED GENERAL APPRAISER

RALLY APPRAISAL LLC

333 E. Minnesota St.
Indianapolis, IN 46225
(563)449-6345(o)
rcagle@rallyappraisal.com

FAITH LEININGER

BUSINESS DEVELOPMENT

VALBRIDGE PROPERTY ADVISORS

6801 Lake Plaza Dr., Ste. C-301
Indianapolis, IN 46220
(317)417-0708(o)
fleininger@valbridge.com

ARCHITECTURE

MELISSA GARRISON, RA, RID

LICENSED ARCHITECT

CURRAN ARCHITECTURE

5719 Lawton Loop East Dr., Ste. 212
Indianapolis, IN 46216
(317)288-0681(o) (419)356-6196 (m)
mgarrison@curran-architecture.com

SPECIALTIES & MEMBERS

CARLA HILL

DIRECTOR SMITHGROUP

11722 Armada Ct.
Fishers, IN 46037
(317)979-8802(o)
carla.hill@smithgroup.com

MELISSA LUTZ, FSMPS, CPSM PRINCIPAL—DIRECTOR OF MARKETING CHAMPLIN ARCHITECTURE

6413 Paxton Woods Dr.
Loveland, OH 45140-8131
(513)241-4474(116)(o) (513)708-1505(m)
melissa.lutz@thinkchamplin.com

SCOTT PEREZ, AIA, NCARB, CSI, CCS, CCCA, MBA, CBO, CBE, RID PRESIDENT

ARX 360, INC.
6015 Orchard Hill Ln.
Indianapolis, IN 46220
(317)520-2558(o) (317)488-8888(m)
scott@arx360.com

ALEXIS ROGGE, COMMERCIAL ARCHITECTURE DESIGN ASSOCIATE AMERICAN STRUCTUREPOINT, INC.

9025 River Rd., Ste. 200
Indianapolis, IN 46240
(317)547-5580(o) (219)781-5448(m)
arogge@structurepoint.com

CARRIE SERMERSHEIM, CPSM PROJECT DEV. | ARCHITECTURE + INTERIORS AMERICAN STRUCTUREPOINT, INC.

9025 River Rd.
Indianapolis, IN 46240
(317)547-5580(o) (317)416-4731(m)
csermersheim@structurepoint.com

JENELLE SMAGALA PRESIDENT SYNTHESIS INCORPORATED

251 N. Illinois St., Ste. 200
Indianapolis, IN 46204-1975
(317)951-9500(o)
smagala@synthinc.com

ASPHALT SERVICES

SKY BLOCK BUSINESS DEVELOPMENT REPRESENTATIVE BAUMGARTNER COMPANY

12461 Reynolds Dr.
Fishers, IN 46038-9265
(317)987-6606(o) (317)987-6606(m)
Sblock@baumgartnerasphalt.com

CASEY RUSSO VICE PRESIDENT YOUNG & SONS ASPHALT PAVING, INC.

6280 S. Cozy Ln.
Whitestown, IN 46075
(317)769-2238(o) (317)900-6406(m)
casey@youngsasphalt.com

ASSET MANAGEMENT

KRISTY CARTER EXECUTIVE VP OF ASSET MANAGEMENT KENNMAR

3500 Depauw Blvd., Ste. 2060
Indianapolis, IN 46268
(317)797-7629(o) (317)797-7629(m)
kristyncarter@comcast.net

JENNIFER HILLMAN GENERAL MANAGER WASHINGTON PRIME GROUP

14390 Clay Terrace Blvd., Ste. 165
Carmel, IN 46032-3669
(317)818-0725(o) (317)828-6737(m)
jjones@wpgus.com

CRYSTAL LAWRENCE SENIOR PROPERTY MANAGER KENNMAR

3500 Depauw Blvd.
Indianapolis, IN 46268
(317)735-3101(o)
clawrence@kennmar.com

SPECIALTIES & MEMBERS

GRETCHEN MENSCH, CPM
EXECUTIVE VICE PRESIDENT
CORNERSTONE COMPANIES, INC.

8902 N. Meridian St., Ste. 205
Indianapolis, IN 46260-5369
(317)288-9003(o) (317)714-1021(m)
gmensch@cornerstonecompaniesinc.com

BROKERAGE

LINDSEY BRIDGEWATER

ASSOCIATE
CBRE, INC.

8888 Keystone Crossing, Ste. 1000
Indianapolis, IN 46240
(317)269-1131(o) (765)721-4130(m)
lindsey.bridgewater@cbre.com

CHRISTA CALDERONE, SLD
SENIOR MANAGER, OFFICE AGENCY SERVICES-
INDIANAPOLIS

COLLIERS
241 N. Pennsylvania St., Ste. 300
Indianapolis, IN 46204-2408
(317)713-2151(o) (317)490-1100(m)
christa.calderone@colliers.com

JOSH CARUANA
FIRST VICE PRESIDENT, DISTRICT MANAGER
MARCUS & MILLICHAP

600 E. 96th St., Ste. 500
Indianapolis, IN 46420
(317)218-5350(o)
jcaruana@marcusmillichap.com

AARON CLOPTON
ASSOCIATE
MARCUS & MILLICHAP

600 E. 96th St., Ste. 500
Indianapolis, IN 46420
(317)218-5382(o) (225)329-6249(m)
Aaron.Cloptonvmarcusmillichap.com

MARISSA FARMER
LEASING MANAGER
KEYSTONE CORPORATION
47 S. Pennsylvania St., 10th Floor
Indianapolis, IN 46204
(317)397-1881(o)
mfarmer@keystone-corp.com

MADISON HARMAN
FIRST VP OF INVESTMENTS
THE YODER HARMAN GROUP

15128 Merritt Pass
Noblesville, IN 46062
(260)494-7213(o)
madison.harmanvmarcusmillichap.com

KRISTIN HORNBERGER
DIRECTOR OF MARKETING
CORNERSTONE COMPANIES, INC.
8902 N. Meridian St., Ste. 205
Indianapolis, IN 46260
(317)754-6244(o) (317)446-8144(m)
khornberger@cornerstonecompaniesinc.com

DONNA HOVEY
LEASING MANAGER
TONN AND BLANK CONSTRUCTION, LLC
5453 N. Illinois St.
Indianapolis, IN 46208
(317)499-7008(o) (317)499-7008(m)
donna.hovey@tonnandblank.com

TAMMY KELLY
BROKER OWNER
KELLY COMMERCIAL REAL ESTATE
410 W. Oak St., Ste. 10A
Zionsville, IN 46077
(317)358-6656(o)
tammy@kellycommercialre.com

CRYSTAL KENNARD
VICE PRESIDENT
THARP REALTY
6910 N. Shadeland Ave., Ste. 200
Indianapolis, IN 46220
(317)418-2464(o)
ckennard@tharprealty.com

People are at
the heart of
what we do.



Member FDIC. © 2023 Huntington Bancshares Incorporated.

CORNERSTONE COMPANIES, INC. IS HONORED
TO SPONSOR AND UPHOLD YOUR MISSION.
WE TAKE PRIDE IN OUR INDYCREW MEMBERS.



Gretchen Mensch, CPM

Kristin Hornberger

Megan Drummond, CPM

Monica Sliger, CPM

PROVIDING HEALTHCARE REAL ESTATE
SOLUTIONS SINCE 1985

8902 N MERIDIAN ST, SUITE 205, INDIANAPOLIS, IN | CORNERSTONECOMPANIESINC.COM



CHARLES C. BRANDT
CONSTRUCTION Co.

Lindsay Fernandez | President
Lfernandez@ccbrandt.com
317.710.7892



Scan to learn more about CCB

CCB is a full-service General Contractor skilled on projects of all sizes. Contact us about your service needs.



SPECIALTIES & MEMBERS

KIMBER KINSLEY
MANAGING DIRECTOR
CBRE, INC.

8888 Keystone Crossing, Ste. 1000
Indianapolis, IN 46240
(317)269-1070(o) (720)394-3853(m)
kimber.kinsley@cbre.com

BRITTNEY LANE
ACCOUNT MANAGER, CLIENT SOLUTIONS
CRESA

167 N. Green St., Ste. 1301
Chicago, IL 60607
(323)552-3537(o) (323)552-3537(m)
blane@cresa.com

ALEXA LARSON
BROKERAGE DIRECTOR
ALO PROPERTY GROUP

9075 N. Meridian St., Ste. 175
Indianapolis, IN 46260-2366
(317)853-7500(o) (317)258-1562(m)
alexa@alopg.com

JENNIFER LEWIS
SENIOR PROJECT DIRECTOR
KCG DEVELOPMENT, LLC

975 Harvest Ridge Dr.
Avon, IN 46123-7142
(317)529-7764(o) (317)513-1912(m)
jenlewis1@yahoo.com

PAUL MABRY
BROKER
KAIZEN REAL ESTATE ADVISORS

1800 N. Meridian St., Ste. 100
Indianapolis, IN 46202
(317)937-2835(o) (317)937-2835(m)
paul@kaizenrea.com

MEGAN MARTIN
SENIOR ADVISOR
CRESA

3820 Nesbitt Rd.
Indianapolis, IN 46220
(317)454-7171(o) (317)938-3321(m)
mmartin@cresa.com

WHITNEY ROBERTS
DIRECTOR
92C PARTNERS, WBE

3950 Priority Way South Dr., Ste. 112
Indianapolis, IN 46240
(317)914-7978(o) (317)914-7978(m)
whitney@92cpartners.com

LESLIE TESKEY
MANAGING PRINCIPAL/TENANT
REPRESENTATIVE
CRESA, WBE

8935 N. Meridian St., Ste. 103
Indianapolis, IN 46260-5348
(317)695-6925(o) (317)695-6925(m)
lteskey@cresa.com

SHARON THOMPSON, EDM, MA
EXECUTIVE DIRECTOR
KW COMMERCIAL

8555 River Rd., Ste. 200
Indianapolis, IN 46240-4304
sharonthompson @ kw.com

SARAH WALKER
LEASING ASSISTANT
ZELLER

11611 N. Meridian St.
Carmel, IN 46032
(317)807-2403(o)
swalker@zeller.us

COMMERCIAL INSURANCE

JANICE PAINE, CCIM
VP P&C COMMERCIAL REAL ESTATE
USI INSURANCE

4408 Dunsany Cir., Ste. 150
Indianapolis, IN 46254-3663
(317)345-9243(o) (317)345-9243(m)
janice.paine@usi.com

SPECIALTIES & MEMBERS

CONSTRUCTION MANAGEMENT/GENERAL CONTRACTING

JENNIFER ALLINSON

PROJECT COORDINATOR

AVENUE CONSTRUCTION

8435 Keystone Crossing Blvd, Ste 140
Indianapolis, IN 46240
(317)703-0902(o)
jallinson@avenuedev.com

MOLLY BURNS

VICE PRESIDENT CORPORATE MARKETING

FA WILHELM

3914 Prospect St.
Indianapolis, IN 46203-2300
(317)440-6071(o) (317)440-6071(m)
mollyburns@fawilhelm.com

LINDSAY FERNANDEZ, LEED AP

PRESIDENT

CHARLES C. BRANDT CONSTRUCTION CO., WBE

1505 N. Sherman Dr.
Indianapolis, IN 46201-1517
(317)375-1111(o) (317)710-7892(m)
lindsayfernandez@ccbrandt.com

ROBERT KORT

OWNER/PRESIDENT

KORT BUILDERS INC.

8709 Castle Park Dr.
Indianapolis, IN 46256-1272
(317)872-4181(o)
bkort@kortbuilders.com

CONSULTING

EMMA CONEY

PROJECT COORDINATOR

MCGUIRE SPONSEL

201 N. Illinois St., Ste. 1000
Indianapolis, IN 46204
(317)207-9283(o) (317)735-5451(m)
econey@mcguirespensel.com

SAMANTHA JULKA

PRESIDENT

DORIS, WBE

535 E. Wabash St.
Indianapolis, IN 46204
(317)713-6364(o) (317)341-4551(m)
sam@dorisresearch.com

ABBEY TITZER

ASSOCIATE PROJECT MANAGER

SIKICH, LLP

8555 River Rd., Ste. 300
Indianapolis, IN 46240
(317)864-7766(o)
abbey.titzer@sikich.com

CRE HUMAN RESOURCES

BRITTANY DOWELL

DIRECTOR OF HUMAN RESOURCES

THE PETERSON COMPANIES

7132 Zionsville Rd.
Indianapolis, IN 46268
(317)910-8445(o)
bsiegler@thepetersonco.com

JULIE WEISENBACH

VP—TALENT & CULTURE

AMBROSE PROPERTY GROUP, MBE

8888 Keystone Xing., Ste. 1150
Indianapolis, IN 46240-4621
(317)6405104(o) (317)640-5104(m)
jweisenbach@ambrosepg.com

ECONOMIC DEVELOPMENT

JULIE ASHMORE, JD

PRESIDENT & CEO

ASHMORE CONSULTING LLC, WBE

PO Box 98
Trafalgar, IN 46181-0098
(317)727-4243(o) (317)727-4243(m)
jashmore@ashmoreconsult.com

SPECIALTIES & MEMBERS

CLAIRE COLLETT

ENTREPRENEURSHIP & INNOVATION MGR. BOONE COUNTY ECONOMIC DEVELOPMENT CORPORATION

2030 Indianapolis Ave.
Lebanon, IN 46052
(317)719-1990(o)
claire@betterinboone.org

ALETHA DUNSTON, AICP

DIRECTOR INDIANAPOLIS ECONOMIC DEVELOPMENT

6431 Evanston Ave.
Indianapolis, IN 46220
(765)661-4724(o) (765)661-4724(m)
alethadunston@gmail.com

JENELL FAIRMAN, PE, LEED, AP

DIRECTOR OF ECONOMIC DEVELOPMENT CITY OF WESTFIELD

2728 E. 171st St.
Westfield, IN 46074
(317)663-9530(o) (317)663-9530(m)
jfairman@westfield.in.gov

LESLIE WAGNER

SENIOR PRINCIPAL GINOVUS

9 Municipal Dr., Ste. 1
Fishers, IN 46038-1629
(317)819-4412(o) (317)460-4676(m)
leslie@ginovus.com

EDUCATION

LORI COE

CAREER CONSULTANT BUTLER UNIVERSITY

4600 Sunset Ave.
Indianapolis, IN 46208-3487
(317)940-6854(o)
lcoe@butler.edu

ELECTRICAL CONTRACTOR

PATRICIA DONOVAN

BUSINESS DEVELOPMENT MANAGER ERMCO

95 Commerce Pkwy. West Dr.
Greenwood, IN 46143
(317)396-4980(o) (317)538-5511(m)
pdonovan@ermco.com

ENGINEERING

CASEY BECKER

CIVIL ENGINEERING ANALYST KIMLEY-HORN AND ASSOCIATES, INC.

250 E. 96th St., Ste. 580
Indianapolis, IN 46240
(317)683-9873(o)
casey.becker@kimley-horn.com

KYLIE BRIGHT-SCHULER, EI

SENIOR STAFF ENGINEER AMERICAN STRUCTUREPOINT, INC.

9025 River Rd. Ste. 200
Indianapolis, IN 46240
(317)547-5580(o) (317)294-5695(m)
kbright@structurepoint.com

KARMEN DEATON, PE

CIVIL ENGINEER KIMLEY-HORN AND ASSOCIATES, INC.

500 E. 96th St., Ste. 300
Indianapolis, IN 46240-3781
(317)296-7096(o) (812)241-1530(m)
karmen.deaton@kimley-horn.com

NAOMI FOSTER

CIVIL ENGINEER/AVIATION JQOL

8440 Allison Pointe Blvd., Ste. 425
Indianapolis, IN 46250
(918)408-7618(o)
nfoster@jqolusa.com

SPECIALTIES & MEMBERS

BRITTANY HEIDENREICH, PE
SENIOR PROJECT MANAGER
PURDUE RESEARCH FOUNDATION

1281 Win Hentschel Blvd.
West Lafayette, IN 47906
(317)605-4972(o) (317)605-4972(m)
bnheidenreich@prf.org

TESSA HUETTL, EI
CIVIL ANALYST
KIMLEY-HORN AND ASSOCIATES, INC.

500 E. 96th St., Ste. 300
Indianapolis, IN 46240
(317)735-6424(o) (928)257-7796(m)
tessa.huettl@kimley-horn.com

MICHELLE JARVIS
SURVEY PROJECT COORDINATOR
V3 COMPANIES

494 Gradle Dr.
Carmel, IN 46032-2536
(317)844-3333(o) (317)698-4316(m)
mjarvis@v3co.com

MADÉLINE KRUEGER
CIVIL ANALYST
KIMLEY-HORN AND ASSOCIATES, INC.

500 E. 96th St., Ste. 300
Indianapolis, IN 46240
(317)912-4608(o) (630)808-2869(m)
madeline.krueger@kimley-horn.com

KATHRYN MADAJ
CORPORATE BUSINESS DEVELOPMENT
CHA CONSULTING, INC.

201 N. Illinois St., Ste. 800
Indianapolis, IN 46204
(800)321-6959(o) (317)306-8292(m)
kmadaj@chacompanies.com

KATHERINE POLACK
CIVIL ANALYST
KIMLEY-HORN AND ASSOCIATES, INC.

500 E. 96th St., Ste. 300
Indianapolis, IN 46240
(317)268-5817(o) (317)968-0890(m)
Kate.Polack@kimley-horn.com

LESLIE STEINERT, MBA
VICE PRESIDENT
LANDWORX ENGINEERING, LLC
958 E. Washington St., Ste. 100
Indianapolis, IN 46202-3987
(317)616-0177(o) (317)488-7104(m)
leslie.steinert@landworxeng.com

ENVIRONMENTAL

JULIE CREWE-SCHILLING, LPG
ENVIRONMENTAL SERVICES GROUP LEADER
V3 COMPANIES

619 North Pennsylvania St.
Indianapolis, IN 46204
(317)748-6838(o) (317)748-6838(m)
jcrewe@v3co.com

AUNNA FADNESS, MSE
STRATEGIC ALLIANCE / BUS. DEV. MGR.
ACUITY ENVIRONMENTAL SOLUTIONS

7965 E. 106th St., Ste. 128
Fishers, IN 46038-2505
(574)876-8727(o)
ahuber@acuityes.com

BRANDI FLOYD
BUSINESS DEVELOPMENT MANAGER
INTERTEK-PSI

5362 W. 78th St.
Indianapolis, IN 46268
(317)471-7293(o) (317)471-7293(m)
brandi.floyd@intertek.com

ALIZABETH HICKS
TRANSACTION SPECIALIST
AUGUST MACK ENVIRONMENTAL INC.

1302 N. Meridian St.
Indianapolis, IN 46203
(517)315-7471(m)
ahicks@augustmack.com

JACINDA JOHNSON
NETWORKING REPRESENTATIVE
AUGUST MACK ENVIRONMENTAL INC.

1302 North Meridian St., Ste. 300
Indianapolis, IN 46204
(765)760-2736(o) (765)760-2736(m)
jjohnson@augustmack.com

SPECIALTIES & MEMBERS

TONIA PIPPIN

SENIOR ENVIRONMENTAL PROJECT MANAGER
CIVIL & ENVIRONMENTAL CONSULTANTS, INC.
(CEC)

11 Municipal Dr.
Fishers, IN 46038
(317)605-7184(o) (317)605-7184(m)
toniapippin@hotmail.com

FIRE PROTECTION

ALICIA BAYS

ACCOUNT MANAGER
RYAN FIRE PROTECTION, INC.

9740 E. 148th St.
Noblesville, IN 46060-4252
(317)645-5751(o)
abays@ryanfp.com

BRAD BOJRAB, AET

VICE PRESIDENT OF BUSINESS DEVELOPMENT
RYAN FIRE PROTECTION, INC.

9740 E. 148th St.
Noblesville, IN 46060-4252
(317)750-5872(o) (317)750-5872(m)
bbojrab@ryanfp.com

INDYCREW

JOELLE COMPTON

EXECUTIVE DIRECTOR
INDYCREW

PO Box 3461
Carmel, IN 46082
(317)339-3495(o)
indycrew@indycrew.org

INTERIOR DESIGN/SPACE PLANNING

ANN ARMSTRONG

BUSINESS DEVELOPER
IMEG CORP.

8900 Keystone Crossing, Ste 210
Indianapolis, IN 46240
(317)518-5218(o) (317)518-5218(m)
ann.p.armstrong@imegcorp.com

LAUREN BAKER

DESIGN DEVELOPMENT MANAGER
MILHAUS

550 E. Washington St.
Indianapolis, IN 46204
(317)679-8449(o)
lbaker180@gmail.com

JULIE BERRY, NCIDQ, LEED-AP, RID PRESIDENT—INDIANA

CARSON DESIGN ASSOCIATES, DBE, WBE, WOSB

9415 Delegates Row
Indianapolis, IN 46240-3805
(317)843-3760(o) (317)372-3346(m)
jberry@carsondesign.com

HEATHER BUSH, NCIDQ

PROJECT MANAGER & DESIGNER
CARSON DESIGN ASSOCIATES, DBE, WBE, WOSB

9415 Delegates Row
Indianapolis, IN 46240
(317)843-5979(o) (317)443-8028(m)
hbush@carsondesign.com

SARA COOK

PRESIDENT
COMMERCIAL OFFICE ENVIRONMENTS, WBE

7301 Zionsville Rd.
Indianapolis, IN 46268-2168
(317)876-9200(o) (317)538-9624(m)
scook@coeindy.com

REBECCA DEAN

VICE PRESIDENT
BUSINESS FURNITURE, LLC, WBE

8421 Bearing Dr.
Indianapolis, IN 46268-1686
(317)371-7503(o) (317)371-7503(m)
deanr@businessfurniture.net

BRANDI HANEY, CIDQ, RID

INTERIOR DESIGNER
CHAMPLIN ARCHITECTURE

20 N. Meridian St., Ste. 700
Indianapolis, IN 46204
(317)917-4474(108)(o)
brandi.haney@thinkchamplin.com

SPECIALTIES & MEMBERS

EMILY HILLYER

PROJECT INTERIOR DESIGNER

SCHOTT DESIGN, INC., WBE

8888 Keystone Crossing, Ste. 100

Indianapolis, IN 46240-3776

(317)762-7840(o)

ehillyer@schottdesign.com

JILL ROSE, RID, IIDA

PRINCIPAL, BUSINESS DEVELOPMENT

LUMINAUT

7012 Bluffgrove Ln.

Indianapolis, IN 46278

(317)902-6006(o) (317)902-6006(m)

jrose@luminaut.com

KELLIE SEABROOKS

VICE PRESIDENT OF STRATEGIC INNOVATION

& CUSTOMER ENGAGEMENT

RJE BUSINESS INTERIORS

621 E. Ohio St.

Indianapolis, IN 46202

(317)372-7189(o) (317)372-7189(m)

kseabrooks@rje-bi.com

ADRIENNE SEARCY,

IIDA, NCIDQ, CID (MD, RID (IN),

LEED AP ID +C

INTERIOR DESIGNER

ARRIS, A DESIGN STUDIO, INC.

1649 Thames St., Ste. 400

Baltimore, MD 21201

(240)301-2628(m)

adrienne@arrisdesign.com

CATHY WATKINS

TERRITORY SALES MGR—INDIANA|KENTUCKY

HAWORTH INC.

One Haworth Center

Holland, MI 49423-9576

(317)250-0301(o)

cathy.watkins@haworth.com

LANDSCAPING

STEPHANIE CARLSON

OWNER

NATURSPIRE, WBE

200 S. Rangeline Rd., Ste. 120B

Carmel, IN 46032

(317)414-5607(o)

steph@naturspire.com

LAW

KIAMESHA-SYLVIA COLOM

PARTNER

TAFT STETTINIUS & HOLLISTER LLP

1 Indiana Sq., Ste. 3500

Indianapolis, IN 46204-2023

(317)713-3340(o) (317)727-3829(m)

kcolom@taftlaw.com

KAYLEE CONLEY

ASSOCIATE

STOLL KEENON OGDEN

334 N. Senate Ave.

Indianapolis, IN 46204

(317)396-2586(o) (765)228-4489(m)

kaylee.conley@skofirm.com

JACKIE DODD, JD

ATTORNEY

JACKIE S. DODD, ATTORNEY AT LAW

8935 N. Meridian St., Ste. 115

Indianapolis, IN 46260-5348

(317)580-9301(o) (317)442-4965(m)

jackie@jdsdlaw.com

CHRISTINA FUGATE

ATTORNEY

ICE MILLER LLP

1 American Sq., Ste. 2900

Indianapolis, IN 46282-0015

(317)236-2374(o) (317)506-3940(m)

christina.fugate@icemiller.com

SPECIALTIES & MEMBERS

CHRISTOPHER HAGENOW

PARTNER

TUOHY BAILEY & MOORE LLP

50 S. Meridian St., Ste. 700
Indianapolis, IN 46204 (317)797-2763
(317)797-2763(o)
chagenow@tbnattorneys.com

CASSANDRA NIELSEN, ESQ.

COUNSEL TO THE FIRM

STOLL KEENON OGDEN

334 North Senate Ave.
Indianapolis, IN 46204
(317)396-2553(o)
cassie.nielsen@skofirm.com

KATHERINE RARICK

ATTORNEY

WALLACK SOMERS & HAAS P.C.

1 Indiana Sq., Ste. 2300
Indianapolis, IN 46204-2012
(317)231-9000(o) (317)432-6205(m)
kwr@wshlaw.com

SHOKRINA RADPOUR BEERING, ESQ.

GENERAL COUNSEL AND CHIEF

COMPLIANCE OFFICER

US AGRICULTURE

12821 E. New Market St., Ste. 300
Carmel, IN 46032
(317)650-4007(o) (317)650-4007(m)
shokrina.beering@us-agriculture.com

CAROLINA RASHIDFAROKHI

ATTORNEY/OWNER

CR LAW LLC

15676 Bodrum Dr.
Fishers, IN 46040
(317)938-7679(o)
carolina.rashidfarokhi@gmail.com

KYRA RIMSANS, JD

GENERAL COUNSEL

FLAHERTY & COLLINS PROPERTIES

1 Indiana Sq., Ste. 3000
Indianapolis, IN 46204-2063
(317)819-2714(o)
krimsans@flco.com

CHERYL SAALFRANK, R.P.

PARALEGAL

SCANNELL PROPERTIES

8801 River Crossing Blvd., Ste. 300
Indianapolis, IN 46240-2394
(317)218-1662(o) (317)755-8096(m)
cheryls@scannellproperties.com

MARY SLADE

LEGAL COUNSEL

METROPOLITAN TITLE COMPANY

8420 N. Park Ave.
Indianapolis, IN 46240-2242
(317)869-2436(o) (317)869-2436(m)
mslade@metrotitle.com

ALEXANDRA "ALI" SYLVIA

PARTNER

PLEWS SHADLEY RACHER & BRAUN LLP

1346 N. Delaware St.
Indianapolis, IN 46202-2415
(317)637-0700(o) (317)431-1290(m)
asylvia@psrb.com

ANDREA TOWNSEND, JD

ASSOCIATE

PLEWS SHADLEY RACHER & BRAUN LLP

1346 N. Delaware St.
Indianapolis, IN 46202-2415
(317)637-0700(o) (765)427-0341(m)
atownsend@psrb.com

ERICA WILLIAMS, JD

COUNSEL

QUARLES & BRADY LLP

411 E. Wisconsin Ave., Ste. 2400
Milwaukee, WI 53202
(317)399-2865(o)
erica.williams@quarles.com

LENDING/FINANCE

NATALIE BEANE, MBA

VP—SR. BUS. DEVELOPMENT OFFICER—SBA

FIRST CHATHAM BANK

11722 Allisonville Rd., Ste. 103 # 264
Fishers, IN 46038-2327
(317)496-4403(o)
nbeane@firstchatham.com

SPECIALTIES & MEMBERS

VALERIE BECKER

SENIOR DIRECTOR, CAPITAL
SCANNELL PROPERTIES

8801 River Crossing Blvd., Ste 300
Indianapolis, IN 46240-2394
(317)218-1688(o) (704)724-7370(m)
valerieb@scannellproperties.com

HEATHER CALVIN

SR. BUSINESS RELATIONSHIP MANAGER VP
JP MORGAN CHASE

1 E. Ohio St.
Indianapolis, IN 46277
(317)684-1556(o) (317)661-1260(m)
heather.n.calvin@chase.com

ABBI CASSADY

ENGAGEMENT COORDINATOR
INDIANA MEMBERS CREDIT UNION

12725 Old Meridian St.
Carmel, IN 46032-8704
(317)554-2981(o) (812)550-8911(m)
acassady@imcu.com

ANGELA CECIL

VP, COMMERCIAL BANKING
BMO HARRIS BANK, N.A.

135 N. Pennsylvania St., Fl 10
Indianapolis, IN 46204-2435
(317)269-1321(o) (317)727-3399(m)
angela.cecil@bmo.com

ALTHEA COOPER

COMMERCIAL RELATIONSHIP MANAGER
OLD NATIONAL BANK

15941 Cumberland Rd.
Noblesville, IN 46037
(317)250-3936(o) (317)250-3936(m)
althea.cooper@oldnational.com

AMBER CORYELL

BUSINESS DEVELOPMENT OFFICER
INDIANA MEMBERS CREDIT UNION

5105 Madison Ave.
Indianapolis, IN 46227-4239
(317)554-8101(o)
acoryell@imcu.com

ERIN DETTWILER

FIRST VICE PRESIDENT, MANAGER,
INVESTMENT REAL ESTATE
FIRST MERCHANTS BANK

221 Red Oak Ln.
Carmel, IN 46033-1969
(317)566-6126(o) (317)690-3967(m)
edettwiler@firstmerchants.com

DELLAMARIE DIETZ

VP & CREDIT MANAGER
THE NATIONAL OF INDIANAPOLIS

107 N. Pennsylvania St., Ste. 300
Indianapolis, IN 46204-2419
(317)459-0319(o) (317)459-0319(m)
delladietz@nbofi.com

RHONDA GRAHAM

PARALEGAL—COMM. LENDING & REAL ESTATE
KRIEG DEVAULT LLP

12800 N. Meridian St., Ste. 300
Carmel, IN 46032
(317)238-6292(o) (317)965-0706(m)
rgraham@kdlegal.com

KIMBERLY HANSEN

VP FINANCE
OLD TOWN COMPANIES

31 1st St. SW
Carmel, IN 46032-2101
(317)507-7142(o)
kimberly.hansen@oldtowncompanies.com

SUSAN HARGROVE

VP SR. COMMERCIAL LENDER
HORIZON BANK

1216 W. Carmel Dr.
Carmel, IN 46032-8707
(317)833-9094(o) (317)833-9094(m)
shargrove@horizonbank.com

LAURA HAYNES

SVP—DIVISION MANAGER
COMMERCIAL REAL ESTATE LENDING
STOCK YARDS BANK & TRUST

201 N. Illinois St., Ste. 400
Indianapolis, IN 46204-4232
(317)238-2830(o) (317)441-6950(m)
laura.haynes@syb.com

SPECIALTIES & MEMBERS

NIAMH HYNES

**UNDERWRITING ANALYST
MERCHANTS CAPITAL CORP.**

410 Monon Blvd., 5th Floor
Carmel, IN 46032
(617)901-1146(o) (617)901-1146(m)
nhynes@merchantscapital.com

ANN KAVALEC

**VICE PRESIDENT
WESBANCO BANK, INC.**

10201 North Illinois St., Ste. 140
Indianapolis, IN 46290
(317)582-0434(o) (317)582-0434(m)
ann.kavalec@wesbanco.com

MARY LEWEN

**COMMERCIAL CREDIT UNDERWRITER III
STAR FINANCIAL RESOURCES**

46 Monument Cir.
Indianapolis, IN 46204
(317)566-7312(o) (812)361-0822(m)
mary.lewen@starfinancial.com

PENELOPE LEWIS, CFP

**VICE PRESIDENT—EMERGING MARKETS
HUNTINGTON BANK**

45 N. Pennsylvania St., Ste. 300
Indianapolis, IN 46204
(317)201-3419(o)
penny.lewis@huntington.com

KATE LOUGHNANE

**FHA UNDERWRITER
MERCHANTS CAPITAL**

410 Monon Blvd., Fl 5
Carmel, IN 46032-2345
(317)324-4816(o) (317)385-6963(m)
kloughnane@merchantscapital.com

CATHERINE LUKEMEYER

**DIRECTOR OF FINANCE
JQOL**

8440 Allison Pointe Blvd., Ste. #425
Indianapolis, IN 46250
(828)398-8531(o) (828)398-8531(m)
clukemeyer@jqolusa.com

MEGAN MAXWELL-RANJBAR

**FHA UNDERWRITER
MERCHANTS CAPITAL CORP.**

410 Monon Blvd., Floor 5
Carmel, IN 46032
(812)583-2124(o)
mmaxwell-ranjbar@merchantscapital.com

AMANDA MEZA

**BUSINESS BANK
HORIZON BANK**

655 3rd St.
Columbus, IN 47201
(812)418-5200(o)
AMeza@horizonbank.com

SUSAN MONIK

**BUSINESS BANKING RELATIONSHIP MANAGER
FIFTH THIRD BANK**

251 N. Illinois St., Floor 10
Indianapolis, IN 46204-1941
(317)383-2275(o) (317)385-0395(m)
susan.monik@53.com

BETSY PHILLIPS

**MANAGING DIRECTOR/SYNDICATIONS
OLD NATIONAL BANK**

900 E. 96th St., Ste. 500
Indianapolis, IN 46032
(317)800-9190(o)
betsy.phillips@oldnational.com

KRISTIN QUINTANA

**FHA SENIOR UNDERWRITER
MERCHANTS CAPITAL**

5921 E. 75th St.
Indianapolis, IN 46250-2766
(574)329-2644(o) (574)329-2644(m)
kquintana@merchantscapital.com

BONNIE RILEY

**ASSISTANT VP, EXECUTIVE BANKER | BUSINESS
DEVELOPMENT OFFICER**

COMMUNITY FIRST BANK OF INDIANA
9333 N. Meridian St., Ste. 125
Indianapolis, IN 46260
(317)763-5232(o) (219)869-0161(m)
briley@cfbindiana.com

SPECIALTIES & MEMBERS

MICHELLE SCHAEFER

VP, COMMERCIAL BANKING

JACKSON COUNTY BANK

2761 Central Ave.

Columbus, IN 47201-3124

(812)378-2764(o) (812)528-2058(m)

mschaefer@jcbank.com

ELLIOTT SOMERS

VP—RELATIONSHIP MANAGER & REGIONAL
BUSINESS DEVELOPMENT DIRECTOR

CITIZENS STATE BANK

12720 Hearthstone Dr.

Fishers, IN 46037-8451

(765)760-8372(o) (765)760-8372(m)

esomers@townfin.com

KIM WALKER

SR. RELATIONSHIP MGR. - PERSONAL BANKER

FORUM CREDIT UNION

P O Box 50738

Indianapolis, IN 46250

(317)809-4601(o) (317)809-4601(m)

kim.walker@forumcu.com

EVE WILKERSON

VICE PRESIDENT

FIRST INTERNET BANK

11201 USA Pkwy.

Fishers, IN 46037-9202

(317)372-7822(o) (317)372-7822(m)

ewilkinson@firstib.com

MARKETING/ADVERTISING

ERIN BROWN

DIRECTOR OF MARKETING STRATEGY

MATCHBOOK, WBE

1317 N. Pennsylvania St.

Indianapolis, IN 46202

(317)525-9859(o)

ebrown@mtchbk.com

CASEY CUPP

FOUNDER, MARKETING CONSULTANT

CCUPP MARKETING CONSULTANTS

5665 Kenyon Trl.

Noblesville, IN 46062-6993

(317)727-9014(o) (317)727-9014(m)

ccupp@ccuppmarketing.com

DONNA GRAY

CEO

MATCHBOOK, WBE

1317 N. Pennsylvania St.

Indianapolis, IN 46202

(317)523-5757(o)

dgray@matchbookcreative.com

CASEY HARRISON

CEO

POLISHED STRATEGIC COMMUNICATIONS, WBE

13205 Deception Pass, Unit 500

Fishers, IN 46038

(317)526-8722(o)

casey@polishedcomms.com

MARIANNE MCCALIP

REAL ESTATE MANAGER

LAMAR ADVERTISING

5711 West Minnesota

Indianapolis, IN 46241

(317)362-0277(o)

mmccalip@lamar.com

PAINTING CONTRACTOR

JANMARIE CONNOR

PRESIDENT/CEO

CONNOR FINE PAINTING, INC., MBE, WBE, WOSB

6925 Hawthorn Park Dr.

Indianapolis, IN 46220-3910

(317)423-0000(o) (317)753-6880(m)

jconnor@connorpainting.com

JENNIFER HINDSLEY

COMMERCIAL MARKETING ASSOCIATE

CERTAPRO

8105 Center Run Rd.

Indianapolis, IN 46250

(317)968-9565(o) (317)694-6152(m)

jhindsley@certapro.com

SPECIALTIES & MEMBERS

PARKING

MARLA BEARD

MARKETING MANAGER

DENISON PARKING, INC.

320 N. Meridian St., Ste. 700

Indianapolis, IN 46204

(463)242-1324(o) (317)779-5751(m)

mbeard@denisonparking.com

PHOTOGRAPHY

LESLIE LANE, MBA

PRESIDENT

STUDIO 13, WBE

705 Elmwood Cir.

Noblesville, IN 46062-8540

(317)440-6232(o)

lesle@studio13online.com

PRINTING/SIGNAGE

CAROLINE HALL

BUSINESS DEVELOPMENT & MARKETING

REPRO GRAPHIX, WBE

PO Box 44026

Indianapolis, IN 46244-0026

(317)695-9559(o) (317)695-9559(m)

chall@reprographix.com

BEVERLY MILLER

PRESIDENT

A SIGN BY DESIGN, INC.

PO Box 691

Zionsville, IN 46052

(317)876-7900(o) (317)590-5950(m)

bevm@asignbydesign.com

PROJECT MANAGEMENT

DEBRA KUNCE, FAIA

VICE PRESIDENT

J.S. HELD LLC

429 N. Pennsylvania St., Ste. 304

Indianapolis, IN 46204

(317)981-7257(o) (317)447-5531(m)

dkunce@jsheld.com

ANGELA SMITH

DEVELOPMENT MANAGER

CONTOUR LAND GROUP

628 E. Parent Ave., Ste. 100

Royal Oak, MI 48067

(317)910-0930(o)

asmith@contourlandgroup.com

PROPERTY MAINTENANCE

KARA COCHRANE

BUSINESS DEVELOPMENT LEAD

SELECT COMMERCIAL SERVICES

8770 Guion Rd., Ste. N

Indianapolis, IN 46268-3017

(317)727-1709(o) (317)727-1709(m)

kcochrane@selectservice.us

RALPH KNAUSS

FOUNDER/CEO

KNAUSS PROPERTY SERVICES, LLC

2817 55th Pl.

Indianapolis, IN 46220-3688

(317)255-9789(o) (317)590-8750(m)

rknauss@propertyservices.com

VICTORIA SCHUMAN

NATIONAL ACCOUNT MANAGER

CHADWELL SUPPLY

757 Massachusetts Ave., Unit 202

Indianapolis, IN 46204-1682

(260)894-2751(o) (260)894-2751(m)

Victoria.Schuman@ChadwellSupply.com

MINDY WINKLER

BRAND AMBASSADOR

KNAUSS PROPERTY SERVICES, LLC

2817 E. 55th Pl.

Indianapolis, IN 46220

(317)800-3799(o) (317)402-8615(m)

mindy.winkler@propertyservices.com

SPECIALTIES & MEMBERS

PROPERTY MANAGEMENT

SAMANTHA BUCK

DIRECTOR OF OPERATIONS-PROP. MGT.
COMMONWEALTH COMMERCIAL PARTNERS
14223 Avian Way, Ste. 20
Carmel, IN 46033
(615)600-9004(o)
sbuck@commonwealthcommercial.com

RUSSELL CHAIN

ASSISTANT PROPERTY MANAGER
ZELLER
201 N. Illinois St.
Indianapolis, IN 46204
(317)813-6106(o)
rchain@zeller.us

ALONDRA DELAO

COMMUNITY ENGAGEMENT MANAGER
ZELLER
201 N. Illinois St.
Indianapolis, IN 46204
(317)599-7578(o)
capcenteramenities@zeller.us

GILLIAN DOWNHAM

VICE PRESIDENT
BECOVIC MANAGEMENT GROUP
8100 E. 106th St., Ste. 200
Fishers, IN 46038
(317)570-0400(o) (317)281-7236(m)
gdownham@becovicgmt.com

MEGAN DRUMMOND, CPM

SENIOR PROPERTY MANAGER
CORNERSTONE COMPANIES, INC.
8902 N. Meridian St., Ste. 205
Indianapolis, IN 46260-5369
(317)288-9005(o) (317)748-4504(m)
mdrummond@cornerstonecompaniesinc.com

LEAH FANTIN, CPM

SENIOR REAL ESTATE MANAGER
CBRE, INC.
8888 Keystone Crossing
Indianapolis, IN 46240
(317)269-1080(o) (812)375-4439(m)
Leah.Fantin@cbre.com

JOAN GIBBONS

DIRECTOR
ORTHOINDY
14093 Short Stone Pl.
Mccordsville, IN 46055-4462
(317)442-6979(o) (317)442-6979(m)
gibbons.joan@att.net

DEE HEADLEY, CPM, CCIM

DIRECTOR
CUSHMAN & WAKEFIELD
110 E. Chestnut
Crawfordsville, IN 47933
(317)236-6433(o) (317)945-2239(m)
dee.headley@cushwake.com

ABBY KICHURA, RPA, LEED GREEN ASSOC.

GENERAL MANAGER
LILLIBRIDGE HEALTHCARE SERVICES, INC.
500 N. Hurstbourne Pkwy., Ste. 200
Louisville, KY 40222
(317)872-1622(o) (312)343-4935(m)
abby.kichura@lillibridge.com

ERIN JONES, CPM

GENERAL MANAGER
ZELLER
201 N. Illinois St., Ste. 325
Indianapolis, IN 46204
(317)813-6103(o) (317)416-8883(m)
ejones@zeller.us

TERESA MANCUSO, CPM

ALLIANCE DIRECTOR
CBRE, INC.
13360 Olivewood Cir.
Carmel, IN 46032-8370
(312)560-1919(o) (312)560-1919(m)
teresa.mancuso@cbre.com

MEGAN NAGEL, CPM, CAPS, & ACOM

REAL ESTATE MANAGER
HENDRICKS COMMERCIAL PROPERTIES
2127 Pleasant St.
Indianapolis, IN 46203-1424
(414)975-2617(o) (414)975-2617(m)
megan.nagel@hendricksgroup.net

SPECIALTIES & MEMBERS

SOUHEIR SALFITY

REAL ESTATE MANAGER

IRONWORKS AT KEYSTONE

2727 East 86th St., Ste. 100

Indianapolis, IN 46240

(317)489-6987(o)

(317)371-7570(m)

Souheir.Salfity@hendricksgroup.net

KATY SCHMIDT, CAM

VP OF RESIDENTIAL MANAGEMENT

HENDRICKS COMMERCIAL PROPERTIES

2727 E. 86th St.

Indianapolis, IN 46240-4394

(317)489-6987(o)

(608)931-3389(m)

Katy.Schmidt@hendricksgroup.net

MONICA SLIGER, CPM

PROPERTY MANAGER

CORNERSTONE COMPANIES, INC.

12073 Flagstone Dr.

Fishers, IN 46037

(317)501-1624(o)

(317)501-1624(m)

indymona@gmail.com

DEANNA SMITH

SENIOR PROPERTY MANAGER

LINK LOGISTICS

2516 N. College Ave.

Indianapolis, IN 46205

(949)246-2882(o)

dsmith@linklogistics.com

JESSICA TAYLOR

REAL ESTATE MANAGER

TONN AND BLANK CONSTRUCTION, LLC

5721 Progress Rd.

Indianapolis, IN 46241-4334

(317)423-1020(128)(o)

(463)202-5326(m)

jessica.taylor@tonnandblank.com

PUBLIC SECTOR

SARAH KUESTER, CAE

EXECUTIVE DIRECTOR

BOMA INDIANA

101 W. Ohio St., Fl 20th

Indianapolis, IN 46204-4204

(317)518-7060(o)

(317)518-7060(m)

sarah@bomaindy.org

PUBLIC SPEAKING

CJ MCCLANAHAN

PRINCIPAL

CJ MCCLANAHAN

5750 Castle Creek Pkwy., #367

Indianapolis, IN 46250

(317)697-2262(o)

cj@cjmcclanahan.com

REAL ESTATE DEVELOPMENT

KATHLEEN BARBAGLIA

VICE PRESIDENT & OFFICE ADMINISTRATOR

PEDCOR INVESTMENTS LLC

770 3rd Ave. SW, One Pedcor Sq.

Carmel, IN 46032-7613

(317)587-0359(o)

(317)696-1995(m)

kittyb@pedcor.net

SHONA BEDWELL

SENIOR VICE PRESIDENT—MARKETING

& HUMAN RESOURCES

BECKNELL INDUSTRIAL

2750 E. 146th St., Ste 200

Carmel, IN 46033-7236

(317)669-6005(o)

(317)418-3912(m)

sbedwell@becknellindustrial.com

ALISON BIRGE

EXECUTIVE VP—DEVELOPMENT & FINANCE

VILLAGE CAPITAL CORPORATION

770 3rd Ave. SW

Carmel, IN 46032

(317)414-7982(o)

abirge@pedcor.net

ANDREW BURROUGHS

SENIOR VICE PRESIDENT

PEDCOR INVESTMENTS LLC

770 3rd Ave. SW

Carmel, IN 46032-7613

(317)587-0348(o)

(317)313-3691(m)

andy@pedcor.net

SPECIALTIES & MEMBERS

MICHAEL BYRON

VICE PRESIDENT-DEVELOPMENT

PEDCOR INVESTMENTS LLC

770 3rd Ave. SW
Carmel, IN 46032-7613
(317)218-2702(o) (317)430-7916(m)
mbyron@pedcor.net

PEYTON CARROLL

DEVELOPMENT ASSOCIATE

THOMPSON THRIFT DEVELOPMENT INC.

111 Monument Cir., Ste. 1500
Indianapolis, IN 46204
(317)496-0036(o) (317)496-0036(m)
pcarroll@thompsonthrift.com

ANDREA CASTANEDA

DIRECTOR OF MARKETING

THOMPSON THRIFT DEVELOPMENT INC.

111 Monument Cir., Ste. 1500
Indianapolis, IN 46204
(626)496-8740(o) (626)496-8740(m)
acastaneda@thompsonthrift.com

DEMETRA DEYAMPERT, MBA

CONSTRUCTION DRAW COORDINATOR

BECKNELL INDUSTRIAL

1497 Starcross Ln., #120
Carmel, IN 46280
(260)580-4075(o) (260)580-4075(m)
ddeyampert@becknellindustrial.com

MORGAN HIGHUM

**DEVELOPMENT AND CONSTRUCTION
MANAGER**

MIDLAND ATLANTIC PROPERTIES

3801 E. 82nd St., Ste. B
Indianapolis, IN 46240-4329
(317)205-4298(o) (317)205-4298(m)
mhighum@midlandatlantic.us

LAUREN HUGHES

VICE PRESIDENT OF BUSINESS DEVELOPMENT

CAPITOL CONSTRUCTION

1349 Chatham Ridge Ct.
Westfield, IN 46074
(317)574-5488(166)(m) (317)376-5860
lkriner@capitolconstruct.com

VEE KIMBRELL

EVP—MARKETING & COMMUNICATIONS

KENNMAR

3500 DePauw Blvd., Suite 2060
Indianapolis, IN 46268
(317)661-4815(o) (404)452-1481(m)
veekimbrell@gmail.com

CHELSEA LEITER-THOMPSON

VICE PRESIDENT OF DEVELOPMENT

BROWNING REAL ESTATE PARTNERS

8940 River Crossing Blvd., Ste. 300
Indianapolis, IN 46240
(727)418-5708(o) (727)418-5708(m)
cthompson@browningrep.com

JULIE PETTYPOOL

DEVELOPMENT ASSOCIATE

BROWNING REAL ESTATE PARTNERS

8940 River Crossing Blvd., Ste. 300
Indianapolis, IN 46240
(317)374-2578(o) (317)374-2578(m)
jpettypool@browningrep.com

ALLIE ROSENBERGER

PRINCIPAL/OWNER

JANI DEVELOPMENT COMPANY

1060 N. Capitol Ave., Ste. 3-101
Indianapolis, IN 46204
(317)410-1792(o) (317)410-1792(m)
allie@janidevco.com

JENNIFER SEWELL

VICE PRESIDENT OF DEVELOPMENT

CITYSCAPE RESIDENTIAL

10 W. Carmel Dr.
Carmel, IN 46032
(317)619-6962(o)
jsewell@cityscaperesidential.com

LEXI SIEGLER

MARKETING MANAGER

BECKNELL INDUSTRIAL

2750 East 146th St., #200
Carmel, IN 46033
(317)805-1244(o) (317)450-6491(m)
lsiegler@becknellindustrial.com

SPECIALTIES & MEMBERS

LORENE WRIGHT
PERIPHERAL DEVELOPER
SIMON PROPERTY GROUP

225 W. Washington St.
Indianapolis, IN 46204
(317)319-6687(o)
lwright@simon.com

DIANA ZAGARZHEVSKIY
SENIOR DIRECTOR
CUSHMAN & WAKEFIELD

One American Square, Ste. 1800
Indianapolis, IN 46282
(317)518-6257(o)
dianazagarzhevskiy@yahoo.com

RELOCATION SERVICES

DANIELLE COSGROVE
SALES REPRESENTATIVE
PLANES COMPANIES

2635 Planes Dr.
Indianapolis, IN 46219
(317)565-3459(o)
dcosgrove@planescompanies.com

RESTORATION

MARY CARTER
MAJOR ACCOUNTS EXECUTIVE
HAYS & SONS COMPLETE RESTORATION, VO

757 E. Murry St.
Indianapolis, IN 46227-1139
(317)504-1109(o) (317)504-1109(m)
Mcarter@haysandsons.com

KAREN KARR
BUSINESS DEVELOPMENT
MIDWEST REMEDIATION

8010 E. 38th St.
Indianapolis, IN 46226
(317)339-2205(o) (317)339-2205(m)
kkarr@goMWR.com

SOLAR

JENNIFER MRZLACK
PRESIDENT
PSG ENERGY GROUP

PSG Energy Group
905 N. Capitol Ave., Ste. 200
Indianapolis, IN 46204
(317)892-8195(o) (317)697-3250 (m)
info@psgenergygroup.com

TECHNOLOGY

KELLY HANEY
PRESIDENT
LINGOTEK SOLUTIONS

7346 Glenview Dr. E
Indianapolis, IN 46250-2454
(317)922-1436(o)
kelly@lingotekinc.com

TIFFANY O'BRIEN
OWNER
ULTIMATE TECHNOLOGIES GROUP

11795 Technology Ln.
Fishers, IN 46038
(317)864-8617(o)
tiffany@ultimatetechnologiesgroup.com

WHITNEY TURSO
ACCOUNT EXECUTIVE
AMERICAN SOUND-INDY

6500 Technology Center Dr., Ste. 300
Indianapolis, IN 46278
(859)802-1159(o) (317)250-9714(m)
whitneyturso@asei.cc

TITLE/ESCROW

KELLIE BOSTON
SALES MANAGER
METROPOLITAN TITLE OF CENTRAL INDIANA

900 E. 96th St., Ste. 105
Indianapolis, IN 46240
(317)570-2600(o) (317)719-7937(m)
kstanleyboston@metrotci.com

SPECIALTIES & MEMBERS

LORI BRINES

**COMMERCIAL/INVESTOR MANAGER
SECURITY TITLE SERVICES**

9225 Priority Way West Dr., Ste. 110
Indianapolis, IN 46240-1572
(317)208-5550(o) (317)441-6790(m)
lbrines@stindy.com

JENNIFER FITZWATER, JD

**VICE PRESIDENT, COMMERCIAL TITLE
VYLLA TITLE, LLC**

15982 Oakhurst Ln.
Fishers, IN 46040
(317)922-3445(o) (317)332-1337(m)
jennifer.fitzwater@vylla.com

CECILIA GRAY

**COMMERCIAL ESCROW OFFICER
FIRST AMERICAN TITLE INSURANCE COMPANY**

211 N. Pennsylvania St., Ste. 1250
Indianapolis, IN 46204
(317)533-4010(o)
cegray@firstam.com

DANIELLE KAISER, JD

**DEPUTY CHIEF UNDERWRITING COUNSEL
DOMA TITLE INSURANCE, INC.**

12999 Macalister Trace
Carmel, IN 46033
(317)625-5605(o) (317)625-5605(m)
danielle.kaiser@doma.com

DENISE KOURIL

**COMMERCIAL ACCOUNT MANAGER
MERIDIAN TITLE CORPORATION**

3850 Priority Way South Dr., Ste. 120
Indianapolis, IN 46240
(317)571-3330(o) (317)750-4545(m)
dkouril@meridiantitle.com

GINA LONGERE

**REAL ESTATE COMMERCIAL CLOSER
FIRST AMERICAN TITLE INSURANCE COMPANY**

251 E. Ohio St., Ste. 200
Indianapolis, IN 46204-2281
(317)684-7556(o)
glongere@firstam.com

SHELLEY NESCOLA

**BUSINESS CONSULTANT
CHICAGO TITLE**

6910 E. 96th St., Ste. 100
Indianapolis, IN 46250
(317)440-0539(o)
shelley.nescola@ctf.com

RHIANNON WALTMAN

**COMMERCIAL ESCROW OFFICER
FIRST AMERICAN TITLE INSURANCE COMPANY**

211 N. Pennsylvania St., Ste. 1250
Indianapolis, IN 46204-1959
(317)616-7318(o) (317)490-0218(m)
rwaltman@firstam.com

UNDERGRADUATE STUDENT MEMBER

MADELINE ELSON

**STUDENT
INDIANA UNIVERSITY**
107 S. Indiana Ave.
Bloomington, IN 47405
(317)402-3767(m)
mcelson@iu.edu

ANASTASIA REINHOLT

STUDENT
6411 North Caldwell Rd.
Lebanon, IN 46052
(765)577-1282(o) (765)577-1282(m)
anastasia.reinholt@gmail.com

— 2024 —

Member & Company Listings

MEMBER & COMPANY LISTING

MEMBER NAME	COMPANY	SPECIALTY	PAGE #/'S
Jennifer Allinson	Avenue Construction	Construction Mgt./Gen. Contracting	21/82
Ann Armstrong	IMEG Corp.	Interior Design/Space Planning	21/85
Julie Ashmore, JD	Ashmore Consulting LLC, WBE	Economic Development	21/82
Lauren Baker	Milhaus	Interior Design/Space Planning	21/85
Kathleen Barbaglia	Pedcor Investments LLC	Real Estate Development	21/93
Alicia Bays	Ryan Fire Protection, Inc.	Fire Protection	22/85
Natalie Beane, MBA	First Chatham Bank	Lending/Finance	22/87
Marla Beard	Denison Parking, Inc.	Parking	22/91
Casey Becker	Kimley-Horn and Associates, Inc.	Engineering	22/83
Valerie Becker	Scannell Properties	Lending/Finance	22/88
Shona Bedwell	Becknell Industrial	Real Estate Development	23/93
Julie Berry, NCIDQ, LEED-AP, RID	Carson Design Associates, DBE, WBE, WOSB	Interior Design/Space Planning	23/85
Alison Birge	Village Capital Corporation	Real Estate Development	23/93
Sky Block	Baumgartner Company	Asphalt Services	23/78
Brad Bojrab, AET	Ryan Fire Protection, Inc.	Fire Protection	23/85
Kellie Boston	Metropolitan Title of Central Indiana	Title/Escrow	24/95
Lindsey Bridgewater	CBRE, Inc.	Brokerage	24/79
Kylie Bright-Schuler, EI	American Structurepoint, Inc.	Engineering	24/83
Lori Brines	Security Title Services	Title/Escrow	24/95
Erin Brown	Matchbook, WBE	Marketing/Advertising	24/90
Samantha Buck	Commonwealth Commercial Partners	Property Management	25/92
Karla Burck	KCG Development, LLC	Acquisitions/Dispositions	25/77
Molly Burns	FA Wilhelm	Construction Mgt./Gen. Contracting	25/82
Andrew Burroughs	Pedcor Investments LLC	Real Estate Development	25/93
Heather Bush, NCIDQ	Carson Design Associates, DBE, WBE, WOSB	Interior Design/Space Planning	25/85
Michael Byron	Pedcor Investments LLC	Real Estate Development	27/94
Rachele Cagle	Rally Appraisal LLC	Appraisal	27/77
Christa Calderone, SLD	Colliers	Brokerage	27/79
Heather Calvin	JP Morgan Chase	Lending/Finance	27/88
Stephanie Carlson	Naturspire, WBE	Landscaping	27/86
Peyton Carroll	Thompson Thrift Development Inc.	Real Estate Development	28/94
Kristy Carter	KennMar	Asset Management	28/78
Mary Carter	Hays & Sons Complete Restoration, VO	Restoration	28/95
Josh Caruana	Marcus & Millichap	Brokerage	28/79
Abbi Cassidy	Indiana Members Credit Union	Lending/Finance	28/87
Andrea Castaneda	Thompson Thrift Development Inc.	Real Estate Development	29/94
Angela Cecil	BMO Harris Bank, N.A.	Lending/Finance	29/88
Russell Chain	Zeller	Property Management	29/92
Ashley Christie, CPA	Katz Sapper & Miller	Accounting	29/77
Aaron Clopton	Marcus & Millichap	Brokerage	29/79
Kara Cochrane	Select Commercial Services	Property Maintenance	31/91
Lori Coe	Butler University	Education	31/83
Claire Collett	Boone County Economic Dev. Corporation	Economic Development	31/83
Kiamesha-Sylvia Colom	Taft Stettinius & Hollister LLP	Law	31/86
Joelle Compton	IndyCREW	IndyCREW	31/85
Emma Coney	McGuire Sponsel	Consulting	32/82
Kaylee Conley	Stoll Keenon Ogden	Law	32/86
Janmarie Connor	Connor Fine Painting, Inc., MBE, WBE, WOSB	Painting Contractor	32/90
Sara Cook	Commercial Office Environments, WBE	Interior Design/Space Planning	32/85
Althea Cooper	Old National Bank	Lending/Finance	32/88
Amber Coryell	Indiana Members Credit Union	Lending/Finance	33/88
Danielle Cosgrove	Planes Companies	Relocation Services	33/95

MEMBER & COMPANY LISTING

MEMBER NAME	COMPANY	SPECIALTY	PAGE #'S
Julie Crewe-Schilling, LPG	V3 Companies	Environmental	33/84
Casey Cupp	Ccupp Marketing Consultants	Marketing/Advertising	33/90
Rebecca Dean	Business Furniture, LLC, WBE	Interior Design/Space Planning	33/85
Karmen Deaton, PE	Kimley-Horn and Associates, Inc.	Engineering	35/83
Alondra DeLaO	Zeller	Property Management	35/92
Erin Dettwiler	First Merchants Bank	Lending/Finance	35/88
Demetra DeYampert, MBA	Becknell Industrial	Real Estate Development	35/94
Dellamarie Dietz	The National of Indianapolis	Lending/Finance	35/88
Jackie Dodd, JD	Jackie S. Dodd, Attorney at Law	Law	36/86
Patricia Donovan	ERMCO	Electrical Contractor	36/83
Brittany Dowell	The Peterson Companies	CRE Human Resources	36/82
Gillian Downham	Becovic Management Group	Property Management	36/92
Megan Drummond, CPM	Cornerstone Companies, Inc.	Property Management	36/92
Aletha Dunston, AICP	Indianapolis Economic Development	Economic Development	37/83
Madeline Elson	Indiana University	Undergraduate Student Member	37/96
Julia Evinger	Marcus & Millichap	Acquisitions/Dispositions	37/77
Anna Fadness, MSES	Acuity Environmental Solutions	Environmental	37/84
Genell Fairman, PE, LEED, AP	City of Westfield	Economic Development	37/83
Leah Fantin, CPM	CBRE	Property Management	39/92
Marissa Farmer	Keystone Corporation	Brokerage	39/79
Lindsay Fernandez, LEED AP	Charles C. Brandt Construction Co., WBE	Construction Mgt./Gen.Contracting	39/82
Jennifer Fitzwater, JD	Vylla Title, LLC	Title/Escrow	39/96
Brandi Floyd	Intertek-PSI	Environmental	39/84
Naomi Foster	JQOL	Engineering	40/83
Christina Fugate	Ice Miller LLP	Law	40/86
Melissa Garrison, RA, RID	Curran Architecture	Architecture	40/77
Joan Gibbons	OrthoIndy	Property Management	40/92
Rhonda Graham	Krieg DeVault LLP	Lending/Finance	40/88
Cecilia Gray	First American Title Insurance Company	Title/Escrow	41/96
Donna Gray	Matchbook, WBE	Marketing/Advertising	41/90
Christopher Hagenow	Tuohy Bailey & Moore LLP	Law	41/87
Caroline Hall	Repro Graphix, WBE	Printing/Signage	41/91
Brandi Haney, CIDQ, RID	Champlin Architecture	Interior Design/Space Planning	41/85
Kelly Haney	Lingotek Solutions	Technology	42/95
Kimberly Hansen	Old Town Companies	Lending/Finance	42/88
Susan Hargrove	Horizon Bank	Lending/Finance	42/88
Madison Harman	The Yoder Harman Group	Brokerage	42/79
Casey Harrison	Polished Strategic Communications, WBE	Marketing/Advertising	42/90
Laura Haynes	Stock Yards Bank & Trust	Lending/Finance	44/88
Dee Headley, CPM, CCIM	Cushman & Wakefield	Property Management	44/92
Brittany Heidenreich, PE	Purdue Research Foundation	Engineering	44/84
Alizabeth Hicks	August Mack Environmental Inc.	Environmental	44/84
Morgan Highum	Midland Atlantic Properties	Real Estate Development	44/94
Carla Hill	SmithGroup	Architecture	45/78
Jennifer Hillman	Washington Prime Group	Asset Management	45/78
Emily Hillyer	Schott Design, Inc., WBE	Interior Design/Space Planning	45/86
Jennifer Hindsley	CertaPro	Painting Contractor	45/90
Kristin Hornberger	Cornerstone Companies, Inc.	Brokerage	45/79
Donna Hovey	Tonn and Blank Construction, LLC	Brokerage	47/79
Tessa Huettl, EI	Kimley-Horn and Associates, Inc.	Engineering	47/84
Lauren Hughes	Capitol Construction	Real Estate Development	47/94
Niamh Hynes	Merchants Capital Corp.	Lending/Finance	47/89

MEMBER & COMPANY LISTING

MEMBER NAME	COMPANY	SPECIALTY	PAGE #'S
Michelle Jarvis	V3 Companies	Engineering	47/84
Jacinda Johnson	August Mack Environmental Inc.	Environmental	48/84
Erin Jones, CPM	Zeller	Property Management	48/92
Samantha Julka	DORIS, WBE	Consulting	48/82
Danielle Kaiser, JD	Doma Title Insurance, Inc.	Title/Escrow	48/96
Karen Karr	Midwest Remediation	Restoration	48/95
Ann Kavalec	WesBanco Bank, Inc.	Lending/Finance	49/89
Tammy Kelly	Kelly Commercial Real Estate	Brokerage	49/79
Crystal Kennard	Tharp Realty	Brokerage	49/79
Abby Kichura, RPA, LEED Green Assoc.	Lillibridge Healthcare Services, Inc.	Property Management	49/93
Vee Kimbrell	KennMar	Real Estate Development	49/94
Kimber Kinsley	CBRE, Inc.	Brokerage	51/81
Ralph Knauss	Knauss Property Services, LLC	Property Maintenance	51/91
Robert Kort	Kort Builders Inc.	Construction Mgt./General Contracting	51/82
Denise Kouril	Meridian Title Corporation	Title/Escrow	51/96
Madeline Krueger	Kimley-Horn and Associates, Inc.	Engineering	51/84
Sarah Kuester, CAE	BOMA Indiana	Public Sector	52/93
Debra Kunce, FAIA	J.S. Held LLC	Program Mgt./Project Mgt.	52/91
Brittney Lane	Cresa	Brokerage	52/81
Lesle Lane, MBA	Studio 13, WBE	Photography	52/91
Alexa Larson	ALO Property Group	Brokerage	52/81
Crystal Lawrence	KennMar	Asset Management	53/78
Faith Leininger	Valbridge Property Advisors	Appraisal	53/77
Chelsea Leiter-Thompson	Browning Real Estate Partners	Real Estate Development	53/94
Mary Lewen	Star Financial Resources	Lending/Finance	53/89
Jennifer Lewis	KCG Development, LLC	Brokerage	53/81
Penelope Lewis, CFP	Huntington Bank	Lending/Finance	54/89
Gina Longere	First American Title Insurance Company	Title/Escrow	54/96
Kate Loughnane	Merchants Capital	Lending/Finance	54/89
Catherine Lukemeyer	JQOL	Lending/Finance	54/89
Melissa Lutz, FSMPS, CPSM	Champlin Architecture	Architecture	54/78
Paul Mabry	Kaizen Real Estate Advisors	Brokerage	55/81
Kathryn Madaj	CHA Consulting, Inc.	Engineering	55/84
Teresa Mancuso, CPM	CBRE, Inc.	Property Management	55/92
Megan Martin	Cresa	Brokerage	55/81
Megan Maxwell-Ranjbar	Merchants Capital Corp.	Lending/Finance	55/89
Marianne McCalip	Lamar Advertising	Marketing/Advertising	57/90
CJ McClanahan	CJ McClanahan	Public Speaking	57/93
Jennifer McNett, CPA	Crowe LLP	Accounting	57/77
Gretchen Mensch, CPM, COO & EVP, PROPERTY MGT.	Cornerstone Companies, Inc.	Asset Management	57/79
Amanda Meza	Horizon Bank	Lending/Finance	57/89
Beverly Miller	A Sign by Design, Inc.	Printing/Signage	58/91
Susan Monik	Fifth Third Bank	Lending/Finance	58/89
Jennifer Mrzlack	PSG Energy Group	Solar	58/95
Megan Nagel, CPM, CAPS, & ACoM	Hendricks Commercial Properties	Property Management	58/92
Shelley Nescola	Chicago Title	Title/Escrow	58/96
Cassandra Nielsen, Esq.	Stoll Keenon Ogden	Law, Esq.	59/87
Tiffany O'Brien	Ultimate Technologies Group	Technology	59/95
Janice Paine, CCIM	USI Insurance	Commercial Insurance	59/81
Rebekah Payne, CPA	MCM CPAs & Advisors LLC	Accounting	59/77
Scott Perez, AIA, NCARB, CSI, CCS, CCCA, MBA, CBO, CBE, RID	Arx 360, Inc.	Architecture	59/78
Julie Pettypool	Browning Real Estate Partners	Real Estate Development	60/94

MEMBER & COMPANY LISTING

MEMBER NAME	COMPANY	SPECIALTY	PAGE #'S
Betsy Phillips	Old National Bank	Lending/Finance	60/89
Tonia Pippin	Civil & Environmental Consultants, Inc. (CEC)	Environmental	60/85
Katherine Polack	Kimley-Horn and Associates, Inc.	Engineering	60/84
Kristin Quintana	Merchants Capital	Lending/Finance	60/89
Shokrina Radpour Beering, Esq.	US Agriculture	Law	61/87
Katherine Rarick	Wallack Somers & Haas P.C.	Law	61/87
Carolina Rashidfarokhi	CR LAW LLC	Law	61/87
Anastasia Reinholt	Student	Undergraduate Student Member	61/96
Bonnie Riley	Community First Bank of Indiana	Lending/Finance	61/89
Kyra Rimsans, JD	Flaherty & Collins Properties	Law	63/87
Whitney Roberts	92c Partners, WBE	Brokerage	63/81
Alexis Rogge, Commercial Architecture	American Structurepoint, Inc.	Architecture	63/78
Jill Rose, RID, HIDA	Luminaut	Interior Design/Space Planning	63/86
Allie Rosenbarger	Jani Development Company	Real Estate Development	63/94
Casey Russo	Young & Sons Asphalt Paving, Inc	Asphalt Services	64/78
Cheryl Saalfrank, R.P.	Scannell Properties	Law	64/87
Souheir Safity	Ironworks at Keystone	Property Management	64/93
Michelle Schaefer	Jackson County Bank	Lending/Finance	64/90
Katy Schmidt, CAM	Hendricks Commercial Properties	Property Management	64/93
Brianne Schneckenberger	Browning Real Estate Partners	Accounting	65/77
Victoria Schuman	Chadwell Supply	Property Maintenance	65/91
Kellie Seabrooks	RJE Business Interiors	Interior Design/Space Planning	65/86
Adrienne Searcy, HIDA, NCIDQ, CID (MG, RD, IN), LEED AP ID + C	Arris, a Design Studio, Inc.	Interior Design/Space Planning	65/86
Carrie Sermersheim, CPSM	American Structurepoint, Inc.	Architecture	65/78
Jennifer Sewell	Cityscape Residential	Real Estate Development	67/94
Lexi Siegler	Becknell Industrial	Real Estate Development	67/94
Mary Slade	Metropolitan Title Company	Law	67/87
Monica Sliger, CPM	Cornerstone Companies, Inc.	Property Management	67/93
Jenelle Smagala	Synthesis Incorporated	Architecture	67/78
Angela Smith	Contour Land Group	Program Mgt./Project Mgt.	68/91
Deanna Smith	Link Logistics	Property Management	68/93
Elliott Somers	Citizens State Bank	Lending/Finance	68/90
Leslie Steinert, MBA	LandWorx Engineering, LLC	Engineering	68/84
Alexandra "Ali" Sylvia	Plews Shadley Racher & Braun LLP	Law	68/87
Jessica Taylor	Tonn and Blank Construction, LLC	Property Management	69/93
Leslie Teskey	Cresa, WBE	Brokerage	69/81
Sharon Thompson, EdM, MA	KW Commercial	Brokerage	69/81
Abbey Titzer	Sikich, LLP	Consulting	69/82
Andrea Townsend, JD	Plews Shadley Racher & Braun LLP	Law	69/87
Whitney Turso	American Sound - Indy	Technology	71/95
Leslie Wagner	Ginovus	Economic Development	71/83
Sarah Walker	Zeller	Brokerage	71/81
Kim Walker	Forum Credit Union	Lending/Finance	71/90
Rhiannon Waltman	First American Title Insurance Company	Title/Escrow	71/96
Cathy Watkins	Haworth Inc.	Interior Design/Space Planning	73/86
Julie Weisenbach	Ambrose Property Group, MBE	CRE Human Resources	73/82
Angela Wethington, CCM, JD	Scannell Properties	Acquisitions/Dispositions	73/77
Eve Wilkerson	First Internet Bank	Lending/Finance	73/90
Erica Williams, JD	Quarles & Brady LLP	Law	73/87
Mindy Winkler	Knauss Property Services, LLC	Property Maintenance	74/91
Lorene Wright	Simon Property Group	Real Estate Development	74/95
Diana Zagazhevskiy	Cushman & Wakefield	Real Estate Development	74/95

COMPANY & MEMBER LISTING

COMPANY	MEMBER NAME	PAGE #'S
92c Partners, WBE	Whitney Roberts	63/81
A Sign by Design, Inc.	Beverly Miller	58/91
Acuity Environmental Solutions	Aunna Fadness, MSES	37/84
ALO Property Group	Alexa Larson	52/81
Ambrose Property Group, MBE	Julie Weisenbach	73/82
American Sound - Indy	Whitney Turso	71/95
American Structurepoint, Inc.	Kylie Bright-Schuler, EI	24/83
American Structurepoint, Inc.	Alexis Rogge, Commercial Architecture	63/78
American Structurepoint, Inc.	Carrie Sermersheim, CPSM	65/78
Arris, a Design Studio, Inc.	Adrienne Searcy, IIDA, NCIDQ, CID (MD, RID (IN), LEED AP ID +C	65/86
Arx 360, Inc.	Scott Perez, AIA, NCARB, CSI, CCS, CCCA, MBA, CBO, CBE, RID	59/78
Ashmore Consulting LLC, WBE	Julie Ashmore, JD	21/82
August Mack Environmental Inc.	Alizbeth Hicks	44/84
August Mack Environmental Inc.	Jacinda Johnson	48/84
Avenue Construction	Jennifer Allinson	21/82
Baumgartner Company	Sky Block	23/78
Becknell Industrial	Shona Bedwell	23/93
Becknell Industrial	Demetra DeVampert, MBA	35/94
Becknell Industrial	Lexi Siegler	67/94
Becovic Management Group	Gillian Downham	36/92
BMO Harris Bank, N.A.	Angela Cecil	29/88
BOMA Indiana	Sarah Kuester, CAE	52/93
Boone County Economic Development Corporation	Claire Collett	31/83
Browning Real Estate Partners	Chelsea Leiter-Thompson	53/94
Browning Real Estate Partners	Julie Pettypool	60/94
Browning Real Estate Partners	Brianne Schneckenberger	65/77
Business Furniture, LLC, WBE	Rebecca Dean	33/85
Butler University	Lori Coe	31/83
Capitol Construction	Lauren Hughes	47/94
Carson Design Associates, DBE, WBE, WOSB	Julie Berry, NCIDQ, LEED-AP, RID	23/85
Carson Design Associates, DBE, WBE, WOSB	Heather Bush, NCIDQ	25/85
CBRE, Inc.	Leah Fantin, CPM	39/92
CBRE, Inc.	Lindsey Bridgewater	24/79
CBRE, Inc.	Kimber Kinsley	51/81
CBRE, Inc.	Teresa Mancuso, CPM	55/92
Ccupp Marketing Consultants	Casey Cupp	33/90
CertaPro	Jennifer Hindsley	45/90
CHA Consulting, Inc.	Kathryn Madaj	55/84
Chadwell Supply	Victoria Schuman	65/91
Champlin Architecture	Brandi Haney, CIDQ, RID	41/85
Champlin Architecture	Melissa Lutz, FSMPS, CPSM	54/78
Charles C. Brandt Construction Co., WBE	Lindsay Fernandez, LEED AP	39/82
Chicago Title	Shelley Nescola	58/96
Citizens State Bank	Elliott Somers	68/90
City of Westfield	Jenell Fairman, PE, LEED, AP	37/83
Cityscape Residential	Jennifer Sewell	67/94
Civil & Environmental Consultants, Inc. (CEC)	Tonia Pippin	60/85
CJ McClanahan	CJ McClanahan	57/93
Colliers	Christa Calderone, SLD	27/79
Commercial Office Environments, WBE	Sara Cook	32/85
Commonwealth Commercial Partners	Samantha Buck	25/92
Community First Bank of Indiana	Bonnie Riley	61/89

COMPANY & MEMBER LISTING

COMPANY	MEMBER NAME	PAGE #'S
Connor Fine Painting, Inc., MBE, WBE, WOSB	Janmarie Connor	32/90
Contour Land Group	Angela Smith	68/91
Cornerstone Companies, Inc.	Megan Drummond, CPM	36/92
Cornerstone Companies, Inc.	Kristin Hornberger	45/79
Cornerstone Companies, Inc.	Gretchen Mensch, CPM, COO and EVP, Property Management	57/79
Cornerstone Companies, Inc.	Monica Sliger, CPM	67/93
CR LAW LLC	Carolina Rashidfarokhi	61/87
Cresa	Brittney Lane	52/81
Cresa	Megan Martin	55/81
Cresa, WBE	Leslie Teskey	69/81
Crowe LLP	Jennifer McNett, CPA	57/77
Curran Architecture	Melissa Garrison, RA, RID	40/77
Cushman & Wakefield	Dee Headley, CPM, CCIM	44/92
Cushman & Wakefield	Diana Zagazhevskiy	74/95
Denison Parking, Inc.	Marla Beard	22/91
Doma Title Insurance, Inc.	Danielle Kaiser, JD	48/96
DORIS, WBE	Samantha Julka	48/82
ERMCO	Patricia Donovan	36/83
FA Wilhelm	Molly Burns	25/82
Fifth Third Bank	Susan Monik	58/89
First American Title Insurance Company	Cecilia Gray	41/96
First American Title Insurance Company	Gina Longere	54/96
First American Title Insurance Company	Rhiannon Waltman	71/96
First Chatham Bank	Natalie Beane, MBA	22/87
First Internet Bank	Eve Wilkerson	73/90
First Merchants Bank	Erin Dettwiler	35/88
Flaherty & Collins Properties	Kyra Rimsans, JD	63/87
Forum Credit Union	Kim Walker	71/90
Ginovus	Leslie Wagner	71/83
Haworth Inc.	Cathy Watkins	73/86
Hays & Sons Complete Restoration, VO	Mary Carter	28/95
Hendricks Commercial Properties	Megan Nagel, CPM, CAPS, & ACoM	58/92
Hendricks Commercial Properties	Katy Schmidt, CAM	64/93
Horizon Bank	Susan Hargrove	42/88
Horizon Bank	Amanda Meza	57/89
Huntington Bank	Penelope Lewis, CFP	54/89
Ice Miller LLP	Christina Fugate	40/86
IMEG Corp.	Ann Armstrong	21/85
Indiana Members Credit Union	Abbi Cassidy	28/88
Indiana Members Credit Union	Amber Coryell	33/88
Indianapolis Economic Development	Aletha Dunston, AICP	37/83
IndyCREW	Joelle Compton	31/85
Intertek-PSI	Brandi Floyd	39/84
Ironworks at Keystone	Souheir Salfity	64/93
J.S. Held LLC	Debra Kunce, FAIA	52/91
Jackie S. Dodd, Attorney at Law	Jackie Dodd, JD	36/86
Jackson County Bank	Michelle Schaefer	64/90
Jani Development Company	Allie Rosenbarger	63/94
JP Morgan Chase	Heather Calvin	27/88
JQOL	Naomi Foster	40/83
JQOL	Catherine Lukemeyer	54/89
Kaizen Real Estate Advisors	Paul Mabry	55/81

COMPANY & MEMBER LISTING

COMPANY	MEMBER NAME	PAGE #'S
Katz Sapper & Miller	Ashley Christie, CPA	29/77
KCG Development, LLC	Karla Burck	25/77
KCG Development, LLC	Jennifer Lewis	53/81
Kelly Commercial Real Estate	Tammy Kelly	49/79
KennMar	Kristy Carter	28/78
KennMar	Vee Kimbrell	49/94
KennMar	Crystal Lawrence	53/78
Keystone Corporation	Marissa Farmer	39/79
Kimley-Horn and Associates, Inc.	Casey Becker	22/83
Kimley-Horn and Associates, Inc.	Karmen Deaton, PE	35/83
Kimley-Horn and Associates, Inc.	Tessa Huettl, EI	47/84
Kimley-Horn and Associates, Inc.	Madeline Krueger	51/84
Kimley-Horn and Associates, Inc.	Katherine Polack	60/84
Knauss Property Services, LLC	Ralph Knauss	51/91
Knauss Property Services, LLC	Mindy Winkler	74/91
Kort Builders Inc.	Robert Kort	51/82
Krieg DeVault LLP	Rhonda Graham	40/88
KW Commercial	Sharon Thompson, EdM, MA	69/81
Lamar Advertising	Marianne McCalip	57/90
LandWorx Engineering, LLC	Leslie Steinert, MBA	68/84
Lillibridge Healthcare Services, Inc.	Abby Kichura, RPA, LEED Green Associate	49/92
Lingotek Solutions	Kelly Haney	42/95
Link Logistics	Deanna Smith	68/93
Luminaut	Jill Rose, RID, IIDA	63/86
Marcus & Millichap	Josh Caruana	28/79
Marcus & Millichap	Aaron Clopton	29/79
Marcus & Millichap	Julia Evinger	37/77
Matchbook, WBE	Erin Brown	24/90
Matchbook, WBE	Donna Gray	41/90
McGuire Sponcel	Emma Coney	32/82
MCM CPAs & Advisors LLC	Rebekah Payne, CPA	59/77
Merchants Capital	Kate Loughnane	54/89
Merchants Capital	Kristin Quintana	60/89
Merchants Capital Corp.	Niamh Hynes	47/89
Merchants Capital Corp.	Megan Maxwell-Ranjbar	55/89
Meridian Title Corporation	Denise Kouril	51/96
Metropolitan Title Company	Mary Slade	67/87
Metropolitan Title of Central Indiana	Kellie Boston	24/95
Midland Atlantic Properties	Morgan Highum	44/94
Midwest Remediation	Karen Karr	48/95
Milhaus	Lauren Baker	21/85
Naturespire, WBE	Stephanie Carlson	27/86
Old National Bank	Althea Cooper	32/88
Old National Bank	Betsy Phillips	60/89
Old Town Companies	Kimberly Hansen	42/88
OrthoIndy	Joan Gibbons	40/92
Pedcor Investments LLC	Kathleen Barbaglia	21/93
Pedcor Investments LLC	Andrew Burroughs	25/93
Pedcor Investments LLC	Michael Byron	25/94
Planes Companies	Danielle Cosgrove	33/95
Plews Shadley Racher & Braun LLP	Alexandra "Ali" Sylvia	68/87
Plews Shadley Racher & Braun LLP	Andrea Townsend, JD	69/87

COMPANY & MEMBER LISTING

COMPANY	MEMBER NAME	PAGE #'S
Polished Strategic Communications, WBE	Casey Harrison	42/90
PSG Energy Group	Jennifer Mrzlack	58/95
Purdue Research Foundation	Brittany Heidenreich, PE	44/84
Quarles & Brady LLP	Erica Williams, JD	73/87
Rally Appraisal LLC	Rachele Cagle	27/77
Repro Graphix, WBE	Caroline Hall	41/91
RJE Business Interiors	Kellie Seabrooks	65/86
Ryan Fire Protection, Inc.	Alicia Bays	22/85
Ryan Fire Protection, Inc.	Brad Bojrab, AET	23/85
Scannell Properties	Valerie Becker	22/88
Scannell Properties	Cheryl Saalfrank, R.P.	64/87
Scannell Properties	Angela Wethington, CCIM, JD	73/77
Schott Design, Inc., WBE	Emily Hillyer	45/86
Security Title Services	Lori Brines	24/96
Select Commercial Services	Kara Cochran	31/91
Sikich, LLP	Abbey Titzer	69/82
Simon Property Group	Lorene Wright	74/95
SmithGroup	Carla Hill	45/78
Star Financial Resources	Mary Lewen	53/89
Stock Yards Bank & Trust	Laura Haynes	44/88
Stoll Keenon Ogden	Kaylee Conley	32/86
Stoll Keenon Ogden	Cassandra Nielsen, Esq.	59/87
Student	Madeline Elson	37/96
Student	Anastasia Reinholdt	61/96
Studio 13, WBE	Lesle Lane, MBA	52/91
Synthesis Incorporated	Jenelle Smagala	67/78
Taft Stettinius & Hollister LLP	Kiamesha-Sylvia Colom	31/86
Tharp Realty	Crystal Kennard	49/79
The National of Indianapolis	Dellamarie Dietz	35/88
The Peterson Companies	Brittany Dowell	36/82
The Yoder Harman Group	Madison Harman	42/79
Thompson Thrift Development Inc.	Peyton Carroll	28/94
Thompson Thrift Development Inc.	Andrea Castaneda	29/94
Tonn and Blank Construction, LLC	Donna Hovey	47/79
Tonn and Blank Construction, LLC	Jessica Taylor	69/93
Tuohy Bailey & Moore LLP	Christopher Hagenow	41/87
Ultimate Technologies Group	Tiffany O'Brien	59/95
US Agriculture	Shokrina Radpour Beering, Esq.	61/87
USI Insurance	Janice Paine, CCIM	59/81
V3 Companies	Julie Crewe-Schilling, LPG	33/84
V3 Companies	Michelle Jarvis	47/84
Valbridge Property Advisors	Faith Leininger	53/77
Village Capital Corporation	Alison Birge	23/93
Vylla Title, LLC	Jennifer Fitzwater, JD	39/96
Wallack Somers & Haas P.C.	Katherine Rarick	61/87
Washington Prime Group	Jennifer Hillman	45/78
WesBanco Bank, Inc.	Ann Kavalec	49/89
Young & Sons Asphalt Paving, Inc	Casey Russo	64/78
Zeller	Russell Chain	29/92
Zeller	Alondra DeLaO	35/92
Zeller	Erin Jones, CPM	48/92
Zeller	Sarah Walker	71/81

COMPANY, CERTIFICATIONS AND MEMBER LISTING

COMPANY	MEMBER NAME	PAGE #'S
92c Partners, WBE	Whitney Roberts	63/81
Ambrose Property Group, MBE	Julie Weisenbach	73/82
Ashmore Consulting LLC, WBE	Julie Ashmore, JD	21/82
Business Furniture, LLC, WBE	Rebecca Dean	33/85
Carson Design Associates, DBE, WBE, WOSB	Julie Berry, NCIDQ, LEED-AP, RID	23/85
Carson Design Associates, DBE, WBE, WOSB	Heather Bush, NCIDQ	25/85
Charles C. Brandt Construction Co., WBE	Lindsay Fernandez, LEED AP	39/82
Commercial Office Environments, WBE	Sara Cook	32/85
Connor Fine Painting, Inc., MBE, WBE, WOSB	Janmarie Connor	32/90
Cresa, WBE	Leslie Teskey	69/81
DORIS, WBE	Samantha Julka	48/82
Hays & Sons Complete Restoration, VO	Mary Carter	28/95
Matchbook, WBE	Erin Brown, WBE	24/90
Matchbook, WBE	Donna Gray, WBE	41/90
Naturspire, WBE	Stephanie Carlson	27/86
Polished Strategic Communications, WBE	Casey Harrison	42/90
Repro Graphix, WBE	Caroline Hall	41/91
Schott Design, Inc., WBE	Emily Hillyer	45/86
Studio 13, WBE	Lesle Lane, MBA	52/91

Minority and Women-Owned Business Certifications

DBE	Disadvantaged Business Enterprise
EDWOSB	Economically Disadvantaged Woman-Owned Small Business
MBE	Minority Business Enterprise
WBE	Women Business Enterprise (All U.S. states/territories)
WBE	Women Business Enterprise (Local state)
WOSB	Woman-Owned Small Business
VO	Veteran Owned



**Location Modeling • Site Selection
Incentive Procurement and Compliance**

Leslie Wagner, Sr. Principal
IndyCREW member and Past President
leslie@ginovus.com | 317.819.4412

GINOVUS.

THANK YOU 2024 SPONSORS!

DIAMOND LEVEL



PLATINUM LEVEL



GOLD LEVEL



SILVER LEVEL



BRONZE LEVEL

Capitol Construction

DORIS

Kort Builders

Charles C. Brandt Construction

Forum Credit Union

KSM

Connor Fine Painting

Ginovus

Stock Yards Bank

Cornerstone Companies

Huntington Bank

WesBanco Bank

MENTOR PROGRAM SPONSOR: CJ McClanahan